

Datasheet for ABIN5578324  
**anti-FOXF1 antibody (C-Term)**[Go to Product page](#)

## 2 Images

## Overview

Quantity:	100 µL
Target:	FOXF1
Binding Specificity:	C-Term
Reactivity:	Human
Host:	Rabbit
Clonality:	Polyclonal
Conjugate:	This FOXF1 antibody is un-conjugated
Application:	Western Blotting (WB), Immunohistochemistry (Paraffin-embedded Sections) (IHC (p))

## Product Details

Purpose:	Rabbit polyclonal antibody raised against synthetic peptide of human FOXF1.
Immunogen:	A synthetic peptide corresponding to C-terminus of human FOXF1.
Sequence:	PCNPAANPLS GSLSTHSLEQ PYLHQNSHNA PAELQGIPRY HSQSPSMCDR
Cross-Reactivity:	Human

## Target Details

Target:	FOXF1
Alternative Name:	FOXF1 ( <a href="#">FOXF1 Products</a> )
Background:	Full Gene Name: forkhead box F1 Synonyms: FKHL5,FREAC1,MGC105125

## Target Details

Gene ID:	2294
NCBI Accession:	<a href="#">NM_001451</a>
Pathways:	<a href="#">Regulation of Leukocyte Mediated Immunity</a> , <a href="#">Regulation of Muscle Cell Differentiation</a> , <a href="#">Positive Regulation of Immune Effector Process</a>

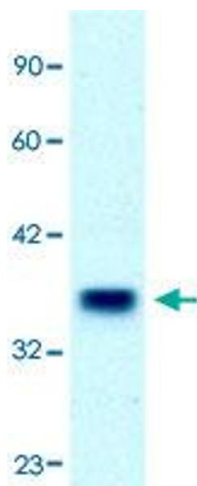
## Application Details

Application Notes:	Immunohistochemistry (Formalin/PFA-fixed paraffin-embedded sections) (4-8 µg/mL) Western Blot The optimal working dilution should be determined by the end user.
Restrictions:	For Research Use only

## Handling

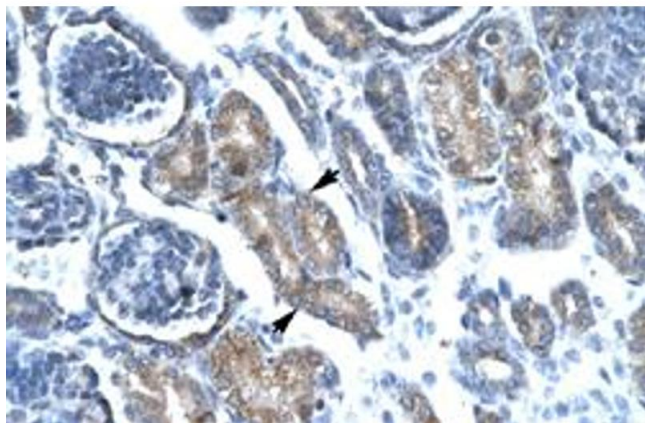
Format:	Liquid
Buffer:	In PBS (2 % sucrose, 0.09 % sodium azide).
Preservative:	Sodium azide
Precaution of Use:	This product contains Sodium azide: a POISONOUS AND HAZARDOUS SUBSTANCE which should be handled by trained staff only.
Storage:	4 °C,-20 °C
Storage Comment:	Store at 4°C. For long term storage store at -20°C. Aliquot to avoid repeated freezing and thawing.

## Images



### Western Blotting

**Image 1.** Western Blot analysis of human placenta tissue lysate with FOXF1 polyclonal antibody at 2.5 µg/mL working concentration.



#### Immunohistochemistry

**Image 2.** Immunohistochemical staining (Formalin-fixed paraffin-embedded sections) of human kidney with FOXF1 polyclonal antibody at 4-8 ug/mL working concentration.