

Datasheet for ABIN5578330

anti-Forkhead Box J2 antibody (Internal Region)[Go to Product page](#)**2** Images

Overview

Quantity:	100 µL
Target:	Forkhead Box J2 (FOXJ2)
Binding Specificity:	Internal Region
Reactivity:	Human
Host:	Rabbit
Clonality:	Polyclonal
Conjugate:	This Forkhead Box J2 antibody is un-conjugated
Application:	Western Blotting (WB), Immunohistochemistry (Paraffin-embedded Sections) (IHC (p))

Product Details

Purpose:	Rabbit polyclonal antibody raised against synthetic peptide of human FOXJ2.
Immunogen:	A synthetic peptide corresponding to internal region of human FOXJ2.
Sequence:	SLQSPTSIAS YSQGTGSVDG GAVAAGASGR ESAEGPPPLY NTNHDFKFSY
Cross-Reactivity:	Human

Target Details

Target:	Forkhead Box J2 (FOXJ2)
Alternative Name:	FOXJ2 (FOXJ2 Products)
Background:	Full Gene Name: forkhead box J2 Synonyms: FHX

Target Details

Gene ID:	55810
NCBI Accession:	NM_018416

Application Details

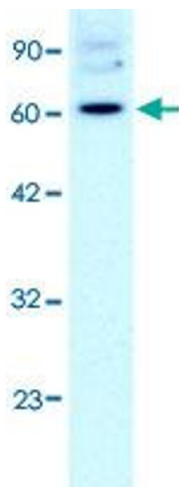
Application Notes:	Immunohistochemistry (Formalin/PFA-fixed paraffin-embedded sections) (4-8 µg/mL) Western Blot (2 µg/mL) The optimal working dilution should be determined by the end user.
--------------------	--

Restrictions:	For Research Use only
---------------	-----------------------

Handling

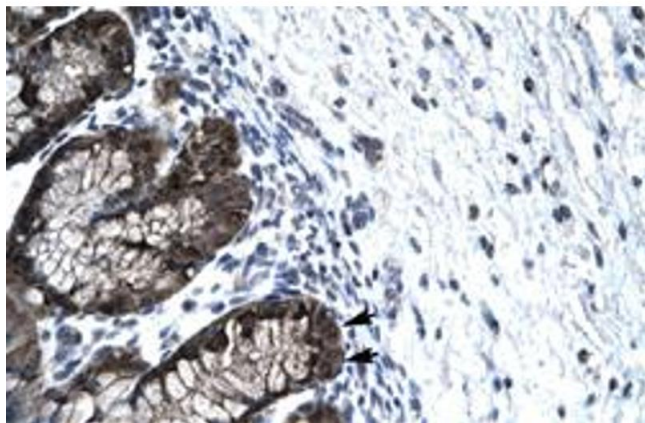
Format:	Liquid
Buffer:	In PBS (2 % sucrose, 0.09 % sodium azide).
Preservative:	Sodium azide
Precaution of Use:	This product contains Sodium azide: a POISONOUS AND HAZARDOUS SUBSTANCE which should be handled by trained staff only.
Storage:	4 °C,-20 °C
Storage Comment:	Store at 4°C. For long term storage store at -20°C. Aliquot to avoid repeated freezing and thawing.

Images



Western Blotting

Image 1. Western Blot analysis of HepG2 cell lysate with FOXJ2 polyclonal antibody at 2 µg/mL working concentration.



Immunohistochemistry

Image 2. Immunohistochemical staining (Formalin-fixed paraffin-embedded sections) of human stomach with FOXJ2 polyclonal antibody at 4-8 ug/mL working concentration.