

Datasheet for ABIN5578381
anti-FPR2 antibody (2nd Extracellular Loop)[Go to Product page](#)

3 Images

Overview

Quantity:	100 µg
Target:	FPR2
Binding Specificity:	2nd Extracellular Loop
Reactivity:	Human
Host:	Rabbit
Clonality:	Polyclonal
Conjugate:	This FPR2 antibody is un-conjugated
Application:	Western Blotting (WB), Flow Cytometry (FACS), Immunofluorescence (IF)

Product Details

Purpose:	Rabbit polyclonal antibody raised against synthetic peptide of FPR2.
Immunogen:	A synthetic peptide (conjugated with KLH) corresponding to residues of 2nd extracellular loop of human FPR2.
Specificity:	This antibody recognizes human FPRL-1. Using HL-60 as positive control.
Cross-Reactivity:	Human

Target Details

Target:	FPR2
Alternative Name:	FPR2 (FPR2 Products)
Background:	Full Gene Name: formyl peptide receptor 2

Target Details

Synonyms: ALXR,FMLP-R-II,FMLPX,FPR2A,FPRH1,FPRH2,FPRL1,HM63,LXA4R

Gene ID: 2358

Application Details

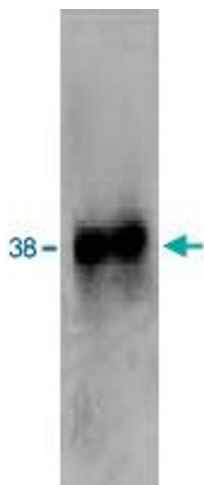
Application Notes: Western Blot (1:4000-1:5000)
Immunofluorescence (1:400-1:500)
Flow Cytometry (1:100)
The optimal working dilution should be determined by the end user.

Restrictions: For Research Use only

Handling

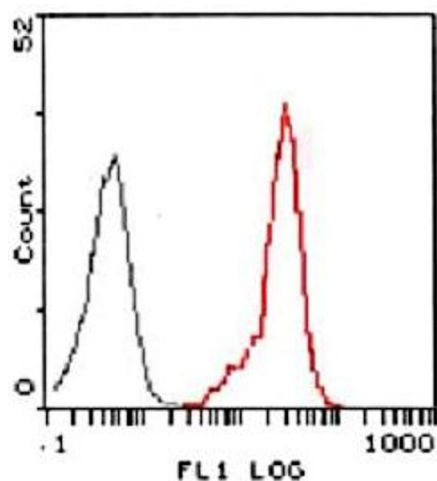
Format: Lyophilized
Buffer: Lyophilized from 10 mM PBS, pH 7.2
Storage: -20 °C
Storage Comment: Store at -20°C on dry atmosphere.
After reconstitution with deionized water, store at -20°C or lower.
Aliquot to avoid repeated freezing and thawing.

Images



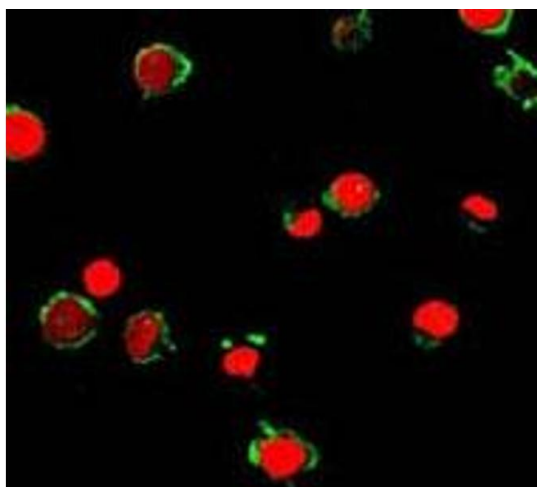
Western Blotting

Image 1. Western blot analysis of extracts from HL-60 cells using FPR2 polyclonal antibody .



Flow Cytometry

Image 2. Flow cytometric analysis of HL-60 cells using FPR2 using FPR2 polyclonal antibody (red) compared to a nonspecific negative control antibody (black).



Immunofluorescence

Image 3. Immunofluorescent analysis of HL-60 cells using FPR2 polyclonal antibody (green). Nucleus have been labeled with PI (red).