

Datasheet for ABIN5578429

anti-FSHR antibody[Go to Product page](#)**1** Image

Overview

Quantity:	100 µg
Target:	FSHR
Reactivity:	Human
Host:	Mouse
Clonality:	Monoclonal
Conjugate:	This FSHR antibody is un-conjugated
Application:	Immunofluorescence (IF), Flow Cytometry (FACS), Immunohistochemistry (Paraffin-embedded Sections) (IHC (p))

Product Details

Purpose:	Mouse monoclonal antibody raised against full length recombinant human FSHR.
Immunogen:	Recombinant protein corresponding to full length human FSHR.
Clone:	FSHR-1400
Isotype:	IgG1
Cross-Reactivity:	Human

Target Details

Target:	FSHR
Alternative Name:	FSHR (FSHR Products)
Background:	Full Gene Name: follicle stimulating hormone receptor

Target Details

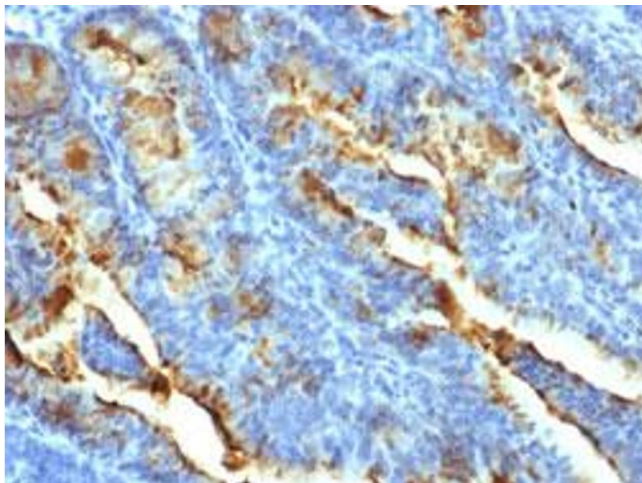
	Synonyms: FSHR0,LGR1,MGC141667,MGC141668,ODG1
Gene ID:	2492
Pathways:	Intracellular Steroid Hormone Receptor Signaling Pathway , Regulation of Intracellular Steroid Hormone Receptor Signaling , Regulation of Hormone Metabolic Process , Platelet-derived growth Factor Receptor Signaling

Application Details

Application Notes:	Flow Cytometry (0.5-1 µg/10 ⁶ cells) Immunofluorescence (1-2 µg/mL) Immunohistochemistry (Formalin/PFA-fixed paraffin-embedded sections) (1-2 µg/mL) The optimal working dilution should be determined by the end user.
Restrictions:	For Research Use only

Handling

Format:	Liquid
Buffer:	In 10 mM PBS (0.05 % BSA, 0.05 % sodium azide).
Preservative:	Sodium azide
Precaution of Use:	This product contains Sodium azide: a POISONOUS AND HAZARDOUS SUBSTANCE which should be handled by trained staff only.
Storage:	4 °C
Storage Comment:	Store at 4°C.



Immunohistochemistry

Image 1. Immunohistochemical staining (Formalin-fixed paraffin-embedded sections) of human uterine carcinoma with FSHR monoclonal antibody, clone FSHR/1400 .