

Datasheet for ABIN5578512
anti-FZD6 antibody (N-Term)

2 Images

[Go to Product page](#)

Overview

Quantity:	50 µg
Target:	FZD6
Binding Specificity:	N-Term
Reactivity:	Human, Monkey, Gorilla, Orang-Utan
Host:	Rabbit
Clonality:	Polyclonal
Conjugate:	This FZD6 antibody is un-conjugated
Application:	Immunohistochemistry (Paraffin-embedded Sections) (IHC (p)), Immunocytochemistry (ICC)

Product Details

Purpose:	Rabbit polyclonal antibody raised against synthetic peptide of FZD6.
Immunogen:	A synthetic peptide corresponding to 16 amino acid at N-terminus of human FZD6.
Specificity:	BLAST analysis of the peptide immunogen showed no homology with other human proteins, except FZD3 (50 %).
Cross-Reactivity:	Gorilla, Human, Monkey, Orang-Utan
Cross-Reactivity (Details):	BLAST analysis of the peptide immunogen showed no homology with other human proteins, except FZD3 (50 %).

Target Details

Target:	FZD6
---------	------

Target Details

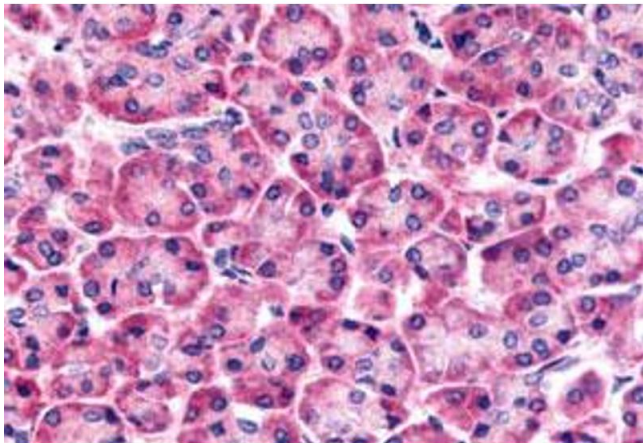
Alternative Name:	FZD6 (FZD6 Products)
Background:	Full Gene Name: frizzled homolog 6 (Drosophila) Synonyms: Hfz6
Gene ID:	8323
Pathways:	WNT Signaling , Tube Formation

Application Details

Application Notes:	Immunohistochemistry (Formalin/PFA-fixed paraffin-embedded sections) (6-14 µg/mL) The optimal working dilution should be determined by the end user.
Restrictions:	For Research Use only

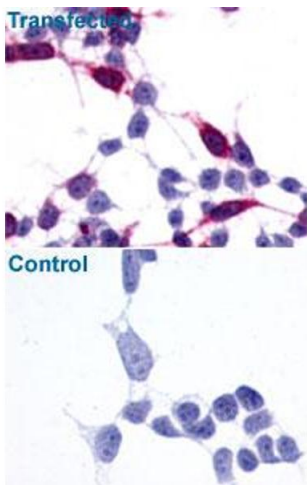
Handling

Format:	Liquid
Buffer:	In PBS (0.09 % sodium azide)
Preservative:	Sodium azide
Precaution of Use:	This product contains Sodium azide: a POISONOUS AND HAZARDOUS SUBSTANCE which should be handled by trained staff only.
Storage:	4 °C,-80 °C
Storage Comment:	Store at 4°C. For long term storage store at -80°C. Aliquot to avoid repeated freezing and thawing.



Immunohistochemistry

Image 1. Immunohistochemistry (Formalin/PFA-fixed paraffin-embedded sections) of human pancreas tissue with FZD6 polyclonal antibody . Immunohistochemistry of formalin-fixed, paraffin-embedded tissue after heat-induced antigen retrieval.



Immunocytochemistry

Image 2. Immunocytochemical anyalysis of FZD6 in 293 cell lysate with FZD6 polyclonal antibody .