



[Go to Product page](#)

Datasheet for ABIN5578514
anti-FZD7 antibody (N-Term)

1 Image

Overview

Quantity:	50 µg
Target:	FZD7
Binding Specificity:	N-Term
Reactivity:	Human, Cow, Gorilla
Host:	Rabbit
Clonality:	Polyclonal
Conjugate:	This FZD7 antibody is un-conjugated
Application:	Immunohistochemistry (Paraffin-embedded Sections) (IHC (p))

Product Details

Purpose:	Rabbit polyclonal antibody raised against synthetic peptide of FZD7.
Immunogen:	A synthetic peptide corresponding to 16 amino acid at N-terminus of human FZD7.
Specificity:	BLAST analysis of the peptide immunogen showed no homology with other human proteins.
Cross-Reactivity:	Cow, Gorilla, Human
Cross-Reactivity (Details):	BLAST analysis of the peptide immunogen showed no homology with other human proteins.

Target Details

Target:	FZD7
Alternative Name:	FZD7 (FZD7 Products)
Background:	Full Gene Name: frizzled homolog 7 (Drosophila)

Target Details

Synonyms: FZE3

Gene ID: 8324

Pathways: [WNT Signaling](#), [Stem Cell Maintenance](#)

Application Details

Application Notes: Immunohistochemistry (Formalin/PFA-fixed paraffin-embedded sections) (20 µg/mL)
The optimal working dilution should be determined by the end user.

Restrictions: For Research Use only

Handling

Format: Liquid

Buffer: In PBS (0.09 % sodium azide)

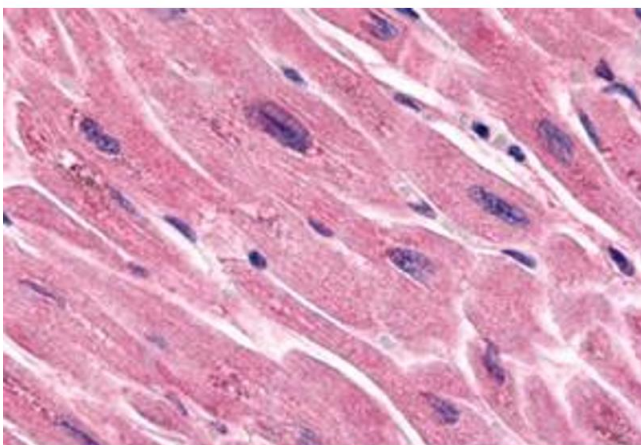
Preservative: Sodium azide

Precaution of Use: This product contains Sodium azide: a POISONOUS AND HAZARDOUS SUBSTANCE which should be handled by trained staff only.

Storage: 4 °C, -80 °C

Storage Comment: Store at 4°C. For long term storage store at -80°C.
Aliquot to avoid repeated freezing and thawing.

Images



Immunohistochemistry

Image 1. Immunohistochemistry (Formalin/PFA-fixed paraffin-embedded sections) of human heart tissue with FZD7 polyclonal antibody. Immunohistochemistry of formalin-fixed, paraffin-embedded tissue after heat-induced antigen retrieval.