



[Go to Product page](#)

Datasheet for ABIN5578515

anti-FZD7 antibody

1 Image

Overview

Quantity:	50 µg
Target:	FZD7
Reactivity:	Human, Mouse, Rat, Cow, Dog, Rabbit, Monkey, Hamster, Gorilla
Host:	Rabbit
Clonality:	Polyclonal
Conjugate:	This FZD7 antibody is un-conjugated
Application:	Immunohistochemistry (Paraffin-embedded Sections) (IHC (p))

Product Details

Purpose:	Rabbit polyclonal antibody raised against synthetic peptide of FZD7.
Immunogen:	A synthetic peptide (conjugated with KLH) corresponding to human FZD7.
Specificity:	C-terminal domain of human.
Cross-Reactivity:	Cow, Dog, Gorilla, Hamster, Human, Monkey, Mouse, Rabbit, Rat

Target Details

Target:	FZD7
Alternative Name:	FZD7 (FZD7 Products)
Background:	Full Gene Name: frizzled homolog 7 (Drosophila) Synonyms: FzE3
Gene ID:	8324

Target Details

Pathways: [WNT Signaling](#), [Stem Cell Maintenance](#)

Application Details

Application Notes: Immunohistochemistry (Formalin/PFA-fixed paraffin-embedded sections) (15 µg/mL)
The optimal working dilution should be determined by the end user.

Restrictions: For Research Use only

Handling

Format: Liquid

Buffer: In PBS (0.09 % sodium azide)

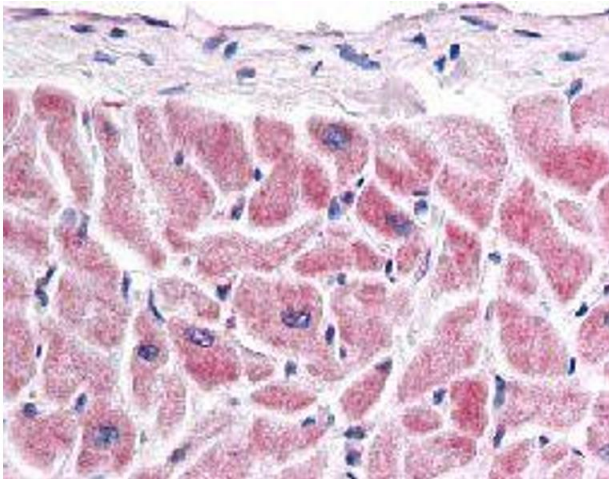
Preservative: Sodium azide

Precaution of Use: This product contains Sodium azide: a POISONOUS AND HAZARDOUS SUBSTANCE which should be handled by trained staff only.

Storage: 4 °C,-80 °C

Storage Comment: Store at 4°C. For long term storage store at -80°C.
Aliquot to avoid repeated freezing and thawing.

Images



Immunohistochemistry

Image 1. Immunohistochemical (Formalin/PFA-fixed paraffin-embedded sections) staining in human heart with FZD7 polyclonal antibody .