

Datasheet for ABIN5578517
anti-FZD8 antibody (N-Term)[Go to Product page](#)

1 Image

Overview

Quantity:	50 µg
Target:	FZD8
Binding Specificity:	N-Term
Reactivity:	Human, Mouse, Rat, Monkey
Host:	Rabbit
Clonality:	Polyclonal
Conjugate:	This FZD8 antibody is un-conjugated
Application:	Immunohistochemistry (Paraffin-embedded Sections) (IHC (p))

Product Details

Purpose:	Rabbit polyclonal antibody raised against synthetic peptide of FZD8.
Immunogen:	A synthetic peptide corresponding to 15 amino acid at N-terminus of human FZD8.
Specificity:	BLAST analysis of the peptide immunogen showed no homology with other human proteins.
Cross-Reactivity:	Human, Monkey, Mouse, Rat
Cross-Reactivity (Details):	BLAST analysis of the peptide immunogen showed no homology with other human proteins.

Target Details

Target:	FZD8
Alternative Name:	FZD8 (FZD8 Products)
Background:	Full Gene Name: frizzled homolog 8 (Drosophila)

Target Details

	Synonyms: FZ-8,hFZ8
Gene ID:	8325
Pathways:	WNT Signaling

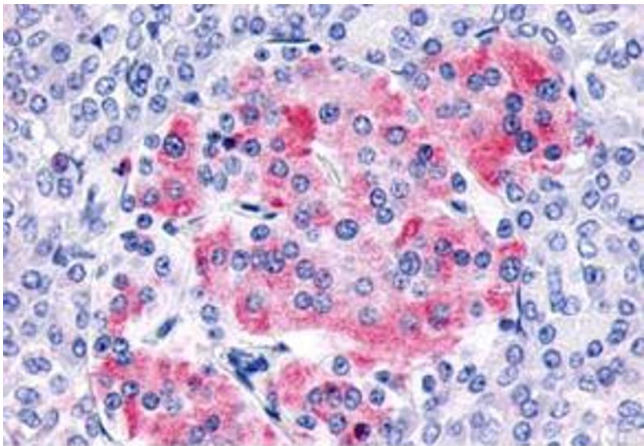
Application Details

Application Notes:	Immunohistochemistry (Formalin/PFA-fixed paraffin-embedded sections) (30 µg/mL) The optimal working dilution should be determined by the end user.
Restrictions:	For Research Use only

Handling

Format:	Liquid
Buffer:	In PBS (0.09 % sodium azide)
Preservative:	Sodium azide
Precaution of Use:	This product contains Sodium azide: a POISONOUS AND HAZARDOUS SUBSTANCE which should be handled by trained staff only.
Storage:	4 °C,-80 °C
Storage Comment:	Store at 4°C. For long term storage store at -80°C. Aliquot to avoid repeated freezing and thawing.

Images



Immunohistochemistry

Image 1. Immunohistochemistry (Formalin/PFA-fixed paraffin-embedded sections) of human pancreas, islet of Langerhans with FZD8 polyclonal antibody . Immunohistochemistry of formalin-fixed, paraffin-embedded tissue after heat-induced antigen retrieval.