



[Go to Product page](#)

Datasheet for ABIN5578576  
**anti-GABRD antibody (N-Term)**

3 Images

### Overview

Quantity:	100 µL
Target:	GABRD
Binding Specificity:	N-Term
Reactivity:	Human, Rat
Host:	Rabbit
Clonality:	Polyclonal
Conjugate:	This GABRD antibody is un-conjugated
Application:	Western Blotting (WB), Immunohistochemistry (Paraffin-embedded Sections) (IHC (p))

### Product Details

Purpose:	Rabbit polyclonal antibody raised against synthetic peptide of human GABRD.
Immunogen:	A synthetic peptide corresponding to N-terminus of human GABRD.
Sequence:	MDAPARLLAP LLLLCAQQLR GTRAMNDIGD YVGSNLEISW LPNLDGLIAG
Cross-Reactivity:	Human, Rat

### Target Details

Target:	GABRD
Alternative Name:	GABRD ( <a href="#">GABRD Products</a> )
Background:	Full Gene Name: gamma-aminobutyric acid (GABA) A receptor, delta Synonyms: MGC45284

## Target Details

Gene ID: 2563

NCBI Accession: [NM\\_000815](#)

## Application Details

Application Notes: Immunohistochemistry (Formalin/PFA-fixed paraffin-embedded sections)  
Western Blot  
The optimal working dilution should be determined by the end user.

Restrictions: For Research Use only

## Handling

Format: Liquid

Buffer: In PBS (2 % sucrose, 0.09 % sodium azide).

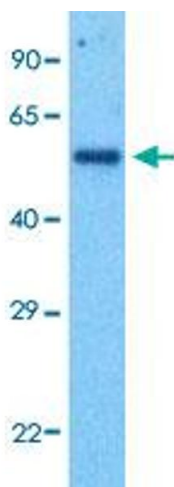
Preservative: Sodium azide

Precaution of Use: This product contains Sodium azide: a POISONOUS AND HAZARDOUS SUBSTANCE which should be handled by trained staff only.

Storage: 4 °C, -20 °C

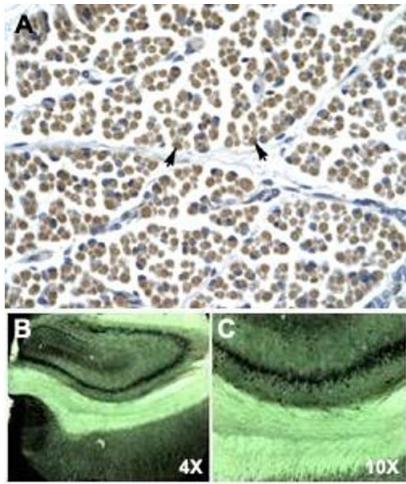
Storage Comment: Store at 4°C. For long term storage store at -20°C.  
Aliquot to avoid repeated freezing and thawing.

## Images



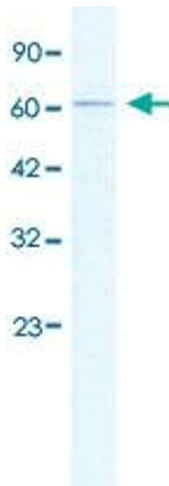
### Western Blotting

**Image 1.** Western Blot analysis of human fetal kidney tissue lysate with GABRD polyclonal antibody at 1 ug/mL working concentration.



### Immunohistochemistry

**Image 2.** Immunohistochemical staining (Formalin-fixed paraffin-embedded sections) of human muscle (A) and rat brain (B, C) with GABRD polyclonal antibody .



### Western Blotting

**Image 3.** Western Blot analysis of HepG2 cell lysate with GABRD polyclonal antibody at 0.2-1 ug/mL working concentration.