

Datasheet for ABIN5578610

**anti-Galanin Receptor 1 antibody (Extracellular Domain)**[Go to Product page](#)**1** Image

## Overview

|                      |   |
|----------------------|---|
| Quantity:            | 50 µg   |
| Target:              | Galanin Receptor 1 (GALR1)                                  |
| Binding Specificity: | Extracellular Domain  |
| Reactivity:          | Human, Monkey, Gorilla                                      |
| Host:                | Rabbit  |
| Clonality:           | Polyclonal  |
| Conjugate:           | This Galanin Receptor 1 antibody is un-conjugated           |
| Application:         | Immunohistochemistry (Paraffin-embedded Sections) (IHC (p)) |

## Product Details

|                             |  |
|-----------------------------|--|
| Purpose:                    | Rabbit polyclonal antibody raised against synthetic peptide of GALR1.                      |
| Immunogen:                  | A synthetic peptide corresponding to 19 amino acid at extracellular domain of human GALR1. |
| Specificity:                | BLAST analysis of the peptide immunogen showed no homology with other human proteins.      |
| Cross-Reactivity:           | Gorilla, Human, Monkey   |
| Cross-Reactivity (Details): | BLAST analysis of the peptide immunogen showed no homology with other human proteins.      |

## Target Details

|                   |  |
|-------------------|--|
| Target:           | Galanin Receptor 1 (GALR1)               |
| Alternative Name: | GALR1 ( <a href="#">GALR1 Products</a> ) |
| Background:       | Full Gene Name: galanin receptor 1       |

Target Details

|           |  |
|-----------|--|
|           | Synonyms: GALNR,GALNR1                 |
| Gene ID:  | 2587                                   |
| Pathways: | <a href="#">cAMP Metabolic Process</a> |

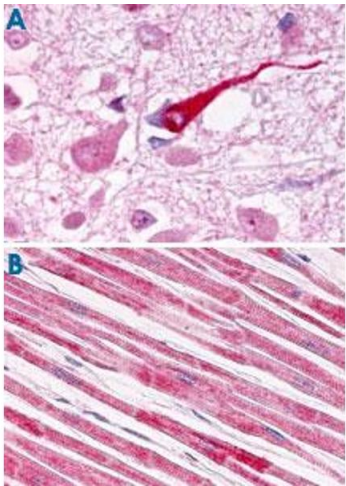
Application Details

|                    |  |
|--------------------|--|
| Application Notes: | Immunohistochemistry (Formalin/PFA-fixed paraffin-embedded sections) (100 µg/mL)<br>The optimal working dilution should be determined by the end user. |
| Restrictions:      | For Research Use only  |

Handling

|                    |  |
|--------------------|--|
| Format:            | Liquid   |
| Buffer:            | In PBS (0.09 % sodium azide)   |
| Preservative:      | Sodium azide   |
| Precaution of Use: | This product contains Sodium azide: a POISONOUS AND HAZARDOUS SUBSTANCE which should be handled by trained staff only. |
| Storage:           | 4 °C,-80 °C  |
| Storage Comment:   | Store at 4°C. For long term storage store at -80°C.<br>Aliquot to avoid repeated freezing and thawing.                 |

Images



**Immunohistochemistry**

**Image 1.** Immunohistochemistry (Formalin/PFA-fixed paraffin-embedded sections) of human brain (A) and human heart tissue (B) with GALR1 polyclonal antibody . Immunohistochemistry of formalin-fixed, paraffin-embedded tissue after heat-induced antigen retrieval.