

Datasheet for ABIN5578651  
**anti-GATA2 antibody (N-Term)**

## 3 Images

[Go to Product page](#)

## Overview

Quantity:	100 µL
Target:	GATA2
Binding Specificity:	N-Term
Reactivity:	Human, Mouse
Host:	Rabbit
Clonality:	Polyclonal
Conjugate:	This GATA2 antibody is un-conjugated
Application:	Western Blotting (WB), Immunohistochemistry (Paraffin-embedded Sections) (IHC (p))

## Product Details

Purpose:	Rabbit polyclonal antibody raised against synthetic peptide of human GATA2.
Immunogen:	A synthetic peptide corresponding to N-terminus of human GATA2.
Sequence:	PYYANPAHAR ARVSYSPAHA RLTGGQMCRP HLLHSPGLPW LDGGKAALSA
Cross-Reactivity:	Human, Mouse

## Target Details

Target:	GATA2
Alternative Name:	GATA2 ( <a href="#">GATA2 Products</a> )
Background:	Full Gene Name: GATA binding protein 2 Synonyms: MGC2306,NFE1B

## Target Details

Gene ID:	2624
NCBI Accession:	<a href="#">NM_032638</a>
Pathways:	<a href="#">Stem Cell Maintenance</a>

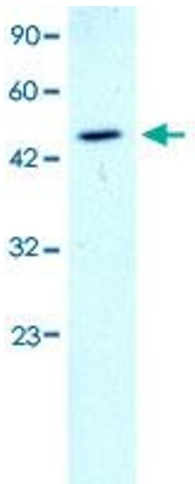
## Application Details

Application Notes:	Immunohistochemistry (Formalin/PFA-fixed paraffin-embedded sections) (4-8 µg/mL) Western Blot The optimal working dilution should be determined by the end user.
Restrictions:	For Research Use only

## Handling

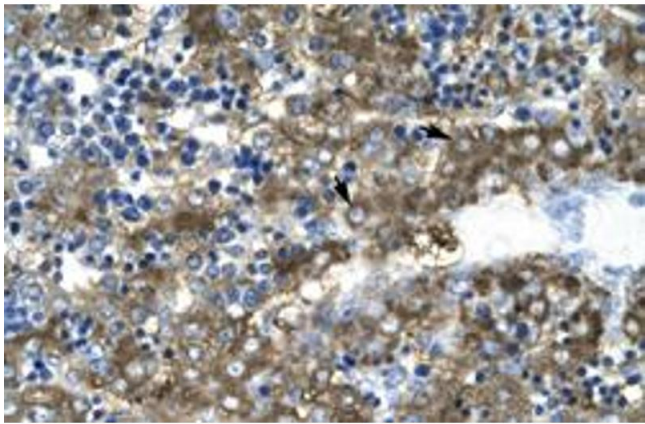
Format:	Liquid
Buffer:	In PBS (2 % sucrose, 0.09 % sodium azide).
Preservative:	Sodium azide
Precaution of Use:	This product contains Sodium azide: a POISONOUS AND HAZARDOUS SUBSTANCE which should be handled by trained staff only.
Storage:	4 °C, -20 °C
Storage Comment:	Store at 4°C. For long term storage store at -20°C. Aliquot to avoid repeated freezing and thawing.

## Images



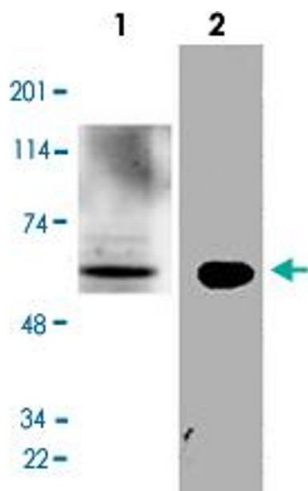
### Western Blotting

**Image 1.** Western Blot analysis of K562 cell lysate with GATA2 polyclonal antibody at 1-2 ug/mL working concentration.



### Immunohistochemistry

**Image 2.** Immunohistochemical staining (Formalin-fixed paraffin-embedded sections) of human liver with GATA2 polyclonal antibody at 4-8 ug/mL working concentration.



### Western Blotting

**Image 3.** Western Blot analysis of mouse liver tissue lysate and N2a cell lysate with GATA2 polyclonal antibody at 1:500 dilution.