

Datasheet for ABIN5578687
anti-GCM1 antibody (N-Term)

3 Images

[Go to Product page](#)

Overview

Quantity:	100 µL
Target:	GCM1
Binding Specificity:	N-Term
Reactivity:	Human
Host:	Rabbit
Clonality:	Polyclonal
Conjugate:	This GCM1 antibody is un-conjugated
Application:	Western Blotting (WB), Immunohistochemistry (Paraffin-embedded Sections) (IHC (p))

Product Details

Purpose:	Rabbit polyclonal antibody raised against synthetic peptide of human GCM1.
Immunogen:	A synthetic peptide corresponding to N-terminus of human GCM1.
Sequence:	MEPDDFDSED KEILSWDIND VKLPQNVKKT DWFQEWPSY AKHIYSSEDK
Cross-Reactivity:	Human

Target Details

Target:	GCM1
Alternative Name:	GCM1 (GCM1 Products)
Background:	Full Gene Name: glial cells missing homolog 1 (Drosophila) Synonyms: GCMA,hGCMA

Target Details

Gene ID:	8521
NCBI Accession:	NM_003643

Application Details

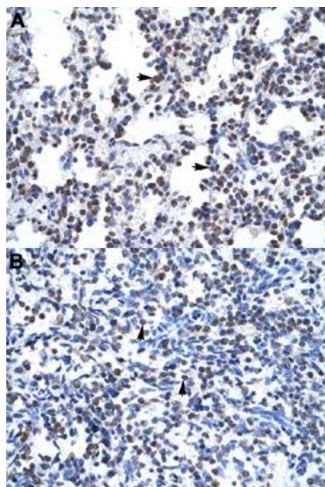
Application Notes:	Immunohistochemistry (Formalin/PFA-fixed paraffin-embedded sections) (4-8 µg/mL) Western Blot The optimal working dilution should be determined by the end user.
--------------------	--

Restrictions:	For Research Use only
---------------	-----------------------

Handling

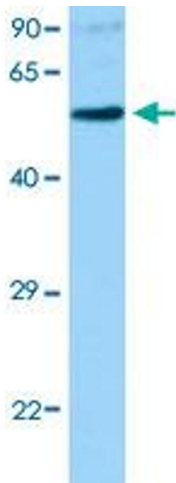
Format:	Liquid
Buffer:	In PBS (2 % sucrose, 0.09 % sodium azide).
Preservative:	Sodium azide
Precaution of Use:	This product contains Sodium azide: a POISONOUS AND HAZARDOUS SUBSTANCE which should be handled by trained staff only.
Storage:	4 °C,-20 °C
Storage Comment:	Store at 4°C. For long term storage store at -20°C. Aliquot to avoid repeated freezing and thawing.

Images



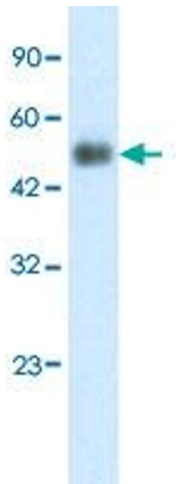
Immunohistochemistry

Image 1. Immunohistochemical staining (Formalin-fixed paraffin-embedded sections) of human lung (A) and human spleen (B) with GCM1 polyclonal antibody at 4-8 ug/mL working concentration.



Western Blotting

Image 2. Western Blot analysis of 293T cell lysate with GCM1 polyclonal antibody at 1 ug/mL working concentration.



Western Blotting

Image 3. Western Blot analysis of human placenta tissue lysate with GCM1 polyclonal antibody at 2.5 ug/mL working concentration.