

Datasheet for ABIN5578721  
**anti-GEM antibody (C-Term)**

## 3 Images

[Go to Product page](#)

## Overview

Quantity:	100 µL
Target:	GEM
Binding Specificity:	C-Term
Reactivity:	Human
Host:	Rabbit
Clonality:	Polyclonal
Conjugate:	This GEM antibody is un-conjugated
Application:	Western Blotting (WB), Immunohistochemistry (Paraffin-embedded Sections) (IHC (p))

## Product Details

Purpose:	Rabbit polyclonal antibody raised against synthetic peptide of human GEM.
Immunogen:	A synthetic peptide corresponding to C-terminus of human GEM.
Sequence:	ETSAAVQHNV KELFEGIVRQ VRLRRDSKEK NERRLAYQKR KESMPRKARR FW
Cross-Reactivity:	Human

## Target Details

Target:	GEM
Alternative Name:	GEM ( <a href="#">GEM Products</a> )
Background:	Full Gene Name: GTP binding protein overexpressed in skeletal muscle Synonyms: KIR,MGC26294

## Target Details

Gene ID:	2669
NCBI Accession:	<a href="#">NM_005261</a>

## Application Details

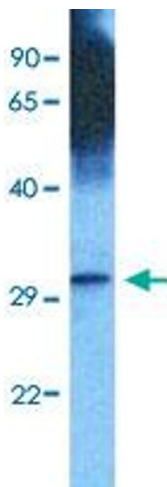
Application Notes:	Immunohistochemistry (Formalin/PFA-fixed paraffin-embedded sections) (4-8 µg/mL) Western Blot The optimal working dilution should be determined by the end user.
--------------------	--

Restrictions:	For Research Use only
---------------	-----------------------

## Handling

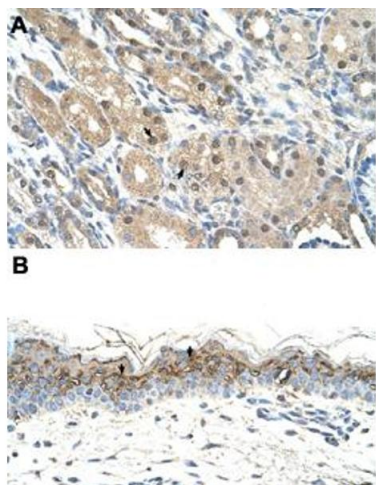
Format:	Liquid
Buffer:	In PBS (2 % sucrose, 0.09 % sodium azide).
Preservative:	Sodium azide
Precaution of Use:	This product contains Sodium azide: a POISONOUS AND HAZARDOUS SUBSTANCE which should be handled by trained staff only.
Storage:	4 °C,-20 °C
Storage Comment:	Store at 4°C. For long term storage store at -20°C. Aliquot to avoid repeated freezing and thawing.

## Images



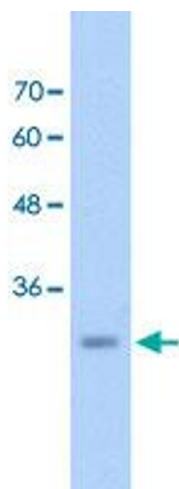
### Western Blotting

**Image 1.** Western Blot analysis of human stomach tumor tissue lysate with GEM polyclonal antibody at 1 ug/mL working concentration.



#### Immunohistochemistry

**Image 2.** Immunohistochemical staining (Formalin-fixed paraffin-embedded sections) of human kidney (A) and human skin (B) with GEM polyclonal antibody at 4-8 ug/mL working concentration.



#### Western Blotting

**Image 3.** Western Blot analysis of HepG2 cell lysate with GEM polyclonal antibody at 2.5 ug/mL working concentration.