



[Go to Product page](#)

Datasheet for ABIN5578725
anti-GEMIN8 antibody

3 Images

Overview

Quantity:	100 µL
Target:	GEMIN8
Reactivity:	Human
Host:	Rabbit
Clonality:	Polyclonal
Conjugate:	This GEMIN8 antibody is un-conjugated
Application:	Western Blotting (WB), Immunohistochemistry (Paraffin-embedded Sections) (IHC (p)), Immunofluorescence (IF)

Product Details

Purpose:	Rabbit polyclonal antibody raised against recombinant GEMIN8.
Immunogen:	Recombinant protein corresponding to amino acids of human GEMIN8.
Sequence:	ASTSKATRPW YSHPVYARYW QHYHQAMAWM QSHHNAYRKA VESCFNLPWY LPSALLPQSS YDNEAAYPQS FYDHHVAWQD YPCSSSHFRR SGQHPRYSSR IQASTKEDQA LSKEEEMETE SDAEVECDLS NMEITEELRQ YFAETER
Isotype:	IgG
Cross-Reactivity:	Human

Target Details

Target:	GEMIN8
Alternative Name:	GEMIN8 (GEMIN8 Products)

Target Details

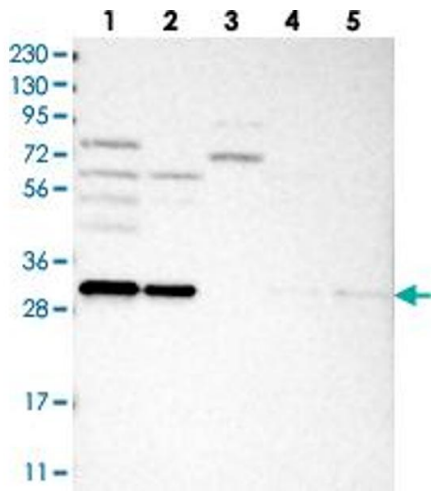
Background:	Full Gene Name: gem (nuclear organelle) associated protein 8 Synonyms: FAM51A1,FLJ20514,FLJ43072
Gene ID:	54960
Pathways:	Ribonucleoprotein Complex Subunit Organization

Application Details

Application Notes:	Immunohistochemistry (1:20-1:50) Western Blot (1:250-1:500) Immunofluorescence (1-4 µg/mL) The optimal working dilution should be determined by the end user.
Restrictions:	For Research Use only

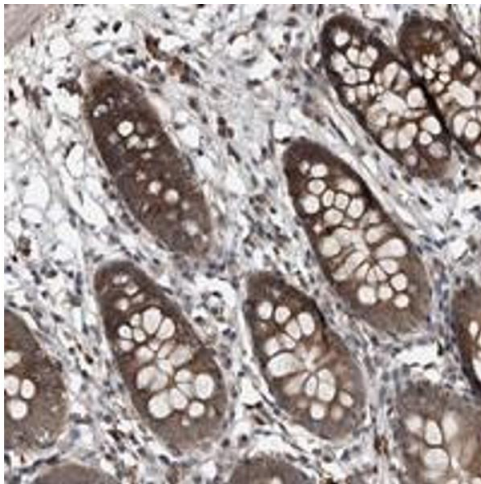
Handling

Format:	Liquid
Buffer:	In PBS, pH 7.2 (40 % glycerol, 0.02 % sodium azide)
Preservative:	Sodium azide
Precaution of Use:	This product contains Sodium azide: a POISONOUS AND HAZARDOUS SUBSTANCE which should be handled by trained staff only.
Storage:	4 °C,-20 °C
Storage Comment:	Store at 4°C. For long term storage store at -20°C. Aliquot to avoid repeated freezing and thawing.



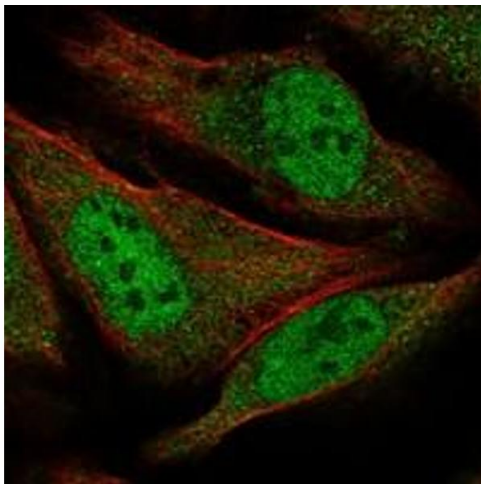
Western Blotting

Image 1. Western blot analysis of Lane 1: RT-4, Lane 2: U-251 MG, Lane 3: Human Plasma, Lane 4: Liver, Lane 5: Tonsil with GEMIN8 polyclonal antibody at 1:250-1:500 dilution.



Immunohistochemistry

Image 2. Immunohistochemical staining of human colon with GEMIN8 polyclonal antibody shows moderate cytoplasmic positivity in glandular cells at 1:20-1:50 dilution.



Immunofluorescence

Image 3. Immunofluorescent staining of human cell line U-2 OS with GEMIN8 polyclonal antibody at 1-4 ug/mL dilution shows positivity in nucleus but not nucleoli and cytoplasm.