

Datasheet for ABIN5578766

anti-GFPT2 antibody**3** Images[Go to Product page](#)

Overview

Quantity:	100 µL
Target:	GFPT2
Reactivity:	Human
Host:	Rabbit
Clonality:	Polyclonal
Conjugate:	This GFPT2 antibody is un-conjugated
Application:	Western Blotting (WB), Immunohistochemistry (Paraffin-embedded Sections) (IHC (p)), Immunofluorescence (IF)

Product Details

Purpose:	GFPT2 polyclonal antibody raised against recombinant human GFPT2.
Immunogen:	Recombinant protein corresponding to amino acids of human GFPT2.
Sequence:	PILYRTCTLE NVKNICKTRM KRLDSSACL
Isotype:	IgG
Cross-Reactivity:	Human

Target Details

Target:	GFPT2
Alternative Name:	GFPT2 (GFPT2 Products)
Background:	Full Gene Name: glutamine-fructose-6-phosphate transaminase 2

Target Details

	Synonyms: FLJ10380,GFAT2
Gene ID:	9945

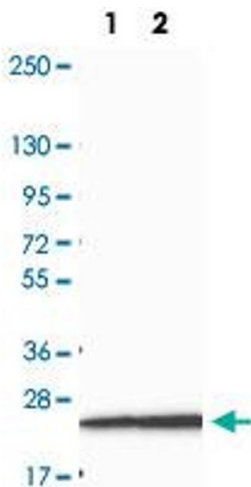
Application Details

Application Notes:	Immunofluorescence (1-4 µg/mL) Immunohistochemistry (1:20-1:50) Western Blot (1:100-1:250) The optimal working dilution should be determined by the end user.
Restrictions:	For Research Use only

Handling

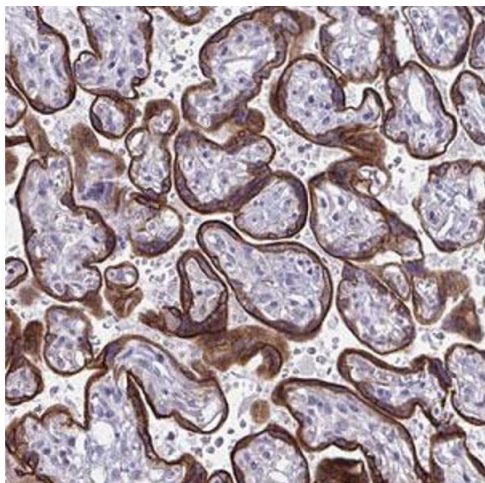
Format:	Liquid
Buffer:	In PBS, pH 7.2 (40 % glycerol, 0.02 % sodium azide)
Preservative:	Sodium azide
Precaution of Use:	This product contains Sodium azide: a POISONOUS AND HAZARDOUS SUBSTANCE which should be handled by trained staff only.
Storage:	4 °C, -20 °C
Storage Comment:	Store at 4°C. For long term storage store at -20°C. Aliquot to avoid repeated freezing and thawing.

Images



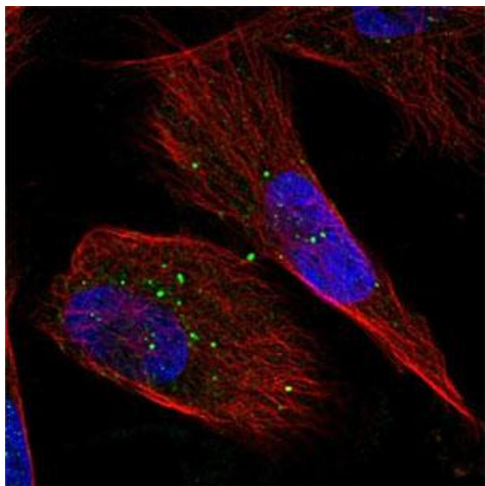
Western Blotting

Image 1. Western Blot (Cell lysate) analysis of Lane 1: RT-4 cell lysate, Lane 2: U-251 MG cell lysate with GFPT2 polyclonal antibody at 1:100 - 1:250 dilution.



Immunohistochemistry

Image 2. Immunohistochemical staining (Formalin-fixed paraffin-embedded sections) of human placenta with GFPT2 polyclonal antibody shows strong cytoplasmic positivity in trophoblastic cells at 1:20 - 1:50 dilution.



Immunofluorescence

Image 3. Immunofluorescent staining of U-251 MG cells with GFPT2 polyclonal antibody under 1-4 ug/mL working concentration shows positivity in vesicles. Antibody staining is shown in green.