



Datasheet for ABIN5578811
anti-GIPC2 antibody (AA 1-315)



[Go to Product page](#)

1 Image

Overview

Quantity:	100 µL
Target:	GIPC2
Binding Specificity:	AA 1-315
Reactivity:	Human
Host:	Mouse
Clonality:	Monoclonal
Conjugate:	This GIPC2 antibody is un-conjugated
Application:	Western Blotting (WB), ELISA, Flow Cytometry (FACS)

Product Details

Purpose:	Mouse monoclonal antibody raised against partial recombinant GIPC2.
Immunogen:	Recombinant protein corresponding to amino acids 1-315 of human GIPC2.
Clone:	AT1G10
Isotype:	IgG1
Cross-Reactivity:	Human

Target Details

Target:	GIPC2
Alternative Name:	GIPC2 (GIPC2 Products)
Background:	Full Gene Name: GIPC PDZ domain containing family, member 2

Target Details

Synonyms: FLJ20075, SEMCAP-2, SEMCAP2

Gene ID: 54810

Application Details

Application Notes: Western Blot (1:1000)

The optimal working dilution should be determined by the end user.

Restrictions: For Research Use only

Handling

Format: Liquid

Concentration: 1 mg/mL

Buffer: In PBS, pH 7.4 (10 % glycerol, 0.02 % sodium azide).

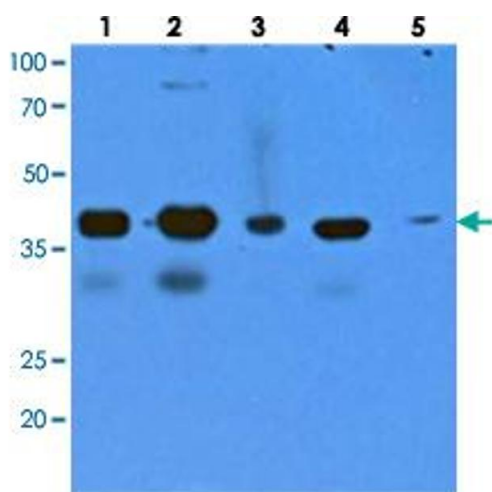
Preservative: Sodium azide

Precaution of Use: This product contains Sodium azide: a POISONOUS AND HAZARDOUS SUBSTANCE which should be handled by trained staff only.

Storage: -20 °C, -80 °C

Storage Comment: Store at 2°C to 8°C for 1 week. For long term storage, aliquot and store at -20°C to -80°C. Aliquot to avoid repeated freezing and thawing.

Images



Western Blotting

Image 1. Western blot analysis of recombinant human GIPC1, 2 (each 20 ng) and cell lysates (40 ug) by using GIPC2 monoclonal antibody, clone AT1G10 (1:1000). Lane1 : GIPC1. Lane2 : GIPC2. Lane 3 : 293T. Lane 4 : HepG2. Lane 5 : HeLa.