



[Go to Product page](#)

Datasheet for ABIN5578812
anti-GIPC2 antibody (N-Term)

2 Images

Overview

Quantity:	100 µL
Target:	GIPC2
Binding Specificity:	N-Term
Reactivity:	Human
Host:	Rabbit
Clonality:	Polyclonal
Conjugate:	This GIPC2 antibody is un-conjugated
Application:	Western Blotting (WB), Immunohistochemistry (Paraffin-embedded Sections) (IHC (p))

Product Details

Purpose:	Rabbit polyclonal antibody raised against synthetic peptide of human GIPC2.
Immunogen:	A synthetic peptide corresponding to N-terminus of human GIPC2.
Sequence:	MPLKLRGKKK AKSKETAGLV EGEPTGAGGG SLSASRAPAR RLVFHAQLAH
Cross-Reactivity:	Human

Target Details

Target:	GIPC2
Alternative Name:	GIPC2 (GIPC2 Products)
Background:	Full Gene Name: GIPC PDZ domain containing family, member 2 Synonyms: FLJ20075,SEMCAP-2,SEMCAP2

Target Details

Gene ID: 54810

NCBI Accession: [NM_017655](#)

Application Details

Application Notes: Immunohistochemistry (Formalin/PFA-fixed paraffin-embedded sections) (4-8 µg/mL)
Western Blot (1.25 µg/mL)
The optimal working dilution should be determined by the end user.

Restrictions: For Research Use only

Handling

Format: Liquid

Buffer: In PBS (2 % sucrose, 0.09 % sodium azide).

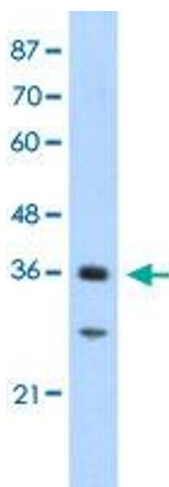
Preservative: Sodium azide

Precaution of Use: This product contains Sodium azide: a POISONOUS AND HAZARDOUS SUBSTANCE which should be handled by trained staff only.

Storage: 4 °C,-20 °C

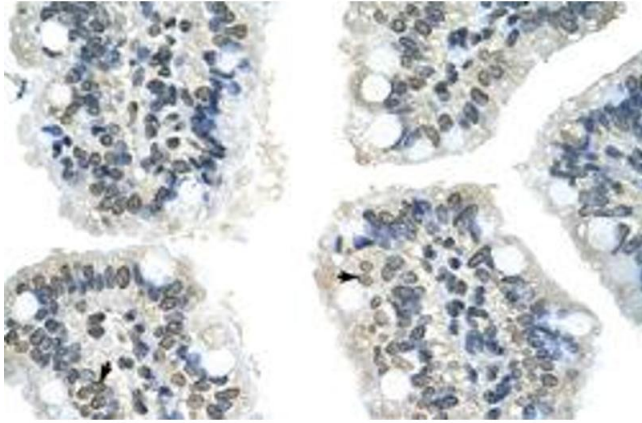
Storage Comment: Store at 4°C. For long term storage store at -20°C.
Aliquot to avoid repeated freezing and thawing.

Images



Western Blotting

Image 1. Western Blot analysis of Jurkat cell lysate with GIPC2 polyclonal antibody at 1.25 µg/mL working concentration.



Immunohistochemistry

Image 2. Immunohistochemical staining (Formalin-fixed paraffin-embedded sections) of human intestine with GIPC2 polyclonal antibody at 4-8 ug/mL working concentration.