

Datasheet for ABIN5578817
anti-GIPR antibody (Extracellular Domain)[Go to Product page](#)

1 Image

Overview

Quantity:	50 µg
Target:	GIPR
Binding Specificity:	Extracellular Domain
Reactivity:	Human, Monkey
Host:	Rabbit
Clonality:	Polyclonal
Conjugate:	This GIPR antibody is un-conjugated
Application:	Immunohistochemistry (Paraffin-embedded Sections) (IHC (p))

Product Details

Purpose:	Rabbit polyclonal antibody raised against synthetic peptide of GIPR.
Immunogen:	A synthetic peptide corresponding to 18 amino acids at N-terminal extracellular domain of human GIPR.
Specificity:	BLAST analysis of the peptide immunogen showed no homology with other human proteins, except GHRHR (72 %), CNNM1 (56 %).
Cross-Reactivity:	Human, Monkey
Cross-Reactivity (Details):	BLAST analysis of the peptide immunogen showed no homology with other human proteins, except GHRHR (72 %), CNNM1 (56 %).

Target Details

Target:	GIPR
---------	------

Target Details

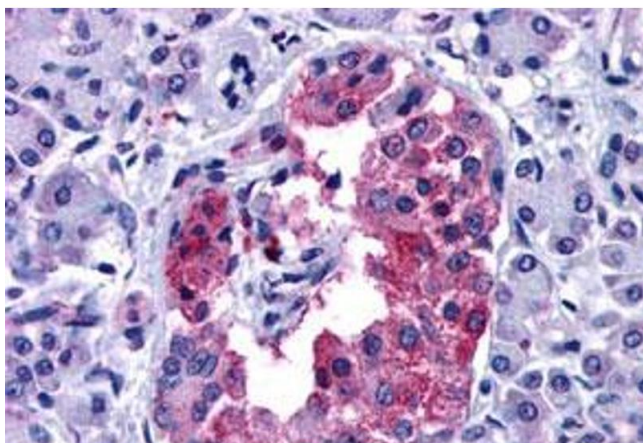
Alternative Name:	GIPR (GIPR Products)
Background:	Full Gene Name: gastric inhibitory polypeptide receptor Synonyms: MGC126722
Gene ID:	2696
Pathways:	Positive Regulation of Peptide Hormone Secretion , cAMP Metabolic Process , Regulation of G-Protein Coupled Receptor Protein Signaling

Application Details

Application Notes:	Immunohistochemistry (Formalin/PFA-fixed paraffin-embedded sections) (19 µg/mL) The optimal working dilution should be determined by the end user.
Restrictions:	For Research Use only

Handling

Format:	Liquid
Buffer:	In PBS (0.09 % sodium azide)
Preservative:	Sodium azide
Precaution of Use:	This product contains Sodium azide: a POISONOUS AND HAZARDOUS SUBSTANCE which should be handled by trained staff only.
Storage:	4 °C,-80 °C
Storage Comment:	Store at 4°C. For long term storage store at -80°C. Aliquot to avoid repeated freezing and thawing.



Immunohistochemistry

Image 1. Immunohistochemistry (Formalin/PFA-fixed paraffin-embedded sections) of human pancreas tissue with GIPR polyclonal antibody . Immunohistochemistry of formalin-fixed, paraffin-embedded tissue after heat-induced antigen retrieval.