

Datasheet for ABIN5578852

anti-GLG1 antibody[Go to Product page](#)**1** Image

Overview

Quantity:	100 µg
Target:	GLG1
Reactivity:	Human
Host:	Mouse
Clonality:	Monoclonal
Conjugate:	This GLG1 antibody is un-conjugated
Application:	Western Blotting (WB), Immunocytochemistry (ICC), Flow Cytometry (FACS), Immunofluorescence (IF), Immunohistochemistry (Paraffin-embedded Sections) (IHC (p))

Product Details

Purpose:	Mouse monoclonal antibody raised against native human GLG1.
Immunogen:	Golgi fraction from human liver cells.
Clone:	GLG1-970
Isotype:	IgG1
Cross-Reactivity:	Human

Target Details

Target:	GLG1
Alternative Name:	GLG1 (GLG1 Products)
Background:	Full Gene Name: golgi apparatus protein 1

Target Details

Synonyms: CFR-1,ESL-1,FLJ23319,FLJ23967,MG-160,MG160

Gene ID: 2734

Application Details

Application Notes: Flow Cytometry (0.5-1 µg/10⁶ cells in 0.1 mL)
Immunofluorescence (0.5-1 µg/mL)
Immunocytochemistry (0.5-1 µg/mL)
Immunohistochemistry (Formalin/PFA-fixed paraffin-embedded sections) (0.5-1 µg/mL)
Western Blot (0.5-1 µg/mL)
The op

Restrictions: For Research Use only

Handling

Format: Liquid

Buffer: In 10 mM PBS (0.05 % BSA, 0.05 % sodium azide).

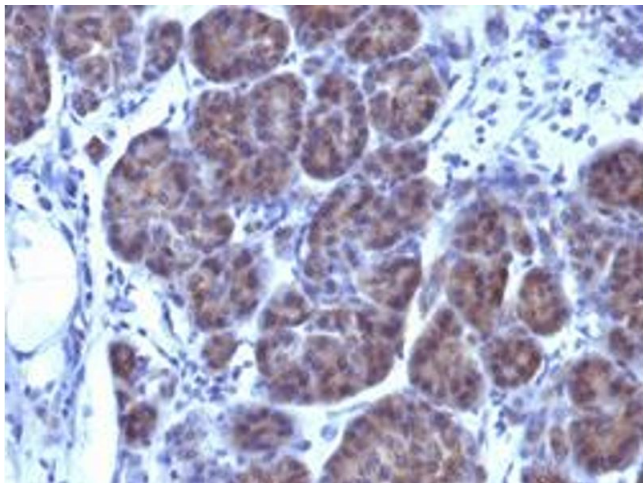
Preservative: Sodium azide

Precaution of Use: This product contains Sodium azide: a POISONOUS AND HAZARDOUS SUBSTANCE which should be handled by trained staff only.

Storage: 4 °C

Storage Comment: Store at 4°C.

Images



Immunohistochemistry

Image 1. Immunohistochemical staining (Formalin-fixed paraffin-embedded sections) of human placenta with GLG1 monoclonal antibody, clone GLG1/970 .