



[Go to Product page](#)

Datasheet for ABIN5578861

## anti-GLO1 antibody

### 2 Images

#### Overview

Quantity:	100 µg
Target:	GLO1
Reactivity:	Mouse
Host:	Rat
Clonality:	Monoclonal
Conjugate:	This GLO1 antibody is un-conjugated
Application:	Western Blotting (WB), ELISA, Immunofluorescence (IF), Immunocytochemistry (ICC)

#### Product Details

Purpose:	Rat monoclonal antibody raised against full length recombinant Glo1.
Immunogen:	Recombinant GST fusion protein corresponding to full length mouse Glo1.
Clone:	6F10
Isotype:	IgG2b
Specificity:	This antibody is specific to Glo1.
Cross-Reactivity:	Human, Monkey, Mouse

#### Target Details

Target:	GLO1
Alternative Name:	Glo1 ( <a href="#">GLO1 Products</a> )
Background:	Full Gene Name: glyoxalase 1

## Target Details

Synonyms: 0610009E22Rik,1110008E19Rik,2510049H23Rik,AW550643,GLY1,Glo-1,Glo-1r,Glo-1s,Glo1-r,Glo1-s,Qglo

Gene ID: 109801

## Application Details

Application Notes: Western Blot (1:1000)  
The optimal working dilution should be determined by the end user.

Restrictions: For Research Use only

## Handling

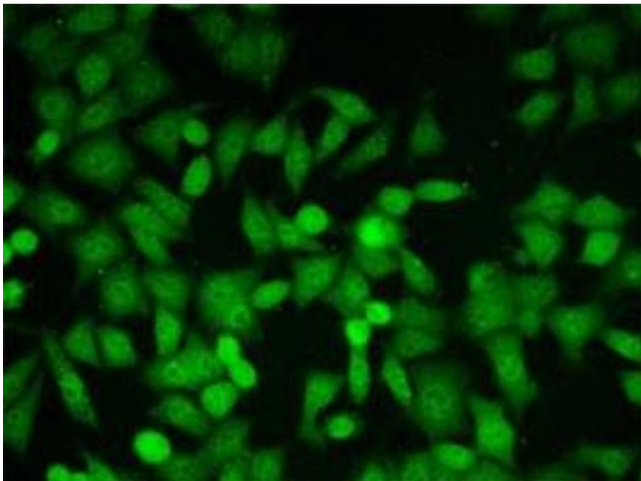
Format: Liquid

Buffer: In PBS (50 % glycerol)

Storage: -20 °C,-80 °C

Storage Comment: Store at -20°C. For long term storage store at -80°C.  
Aliquot to avoid repeated freezing and thawing.

## Images



### Immunofluorescence

**Image 1.** Immunofluorescent staining of HeLa cells with Glo1 monoclonal antibody, clone 6F10 .



### Western Blotting

**Image 2.** Detection of Glo1 protein by Western blotting with Glo1 monoclonal antibody, clone 6F10 . Samples are whole cell extracts : Lane1 : GCOS-1 (simian). Lane2 : GL929 (mouse). Lane3 : GHeLa (human). Mouse Glo1 shows a single band of 27 kDa while human and simian ones show 29 kDa.