



[Go to Product page](#)

Datasheet for ABIN5578862

## anti-GLO1 antibody

### 2 Images

#### Overview

Quantity:	100 µL
Target:	GLO1
Reactivity:	Human
Host:	Mouse
Clonality:	Monoclonal
Conjugate:	This GLO1 antibody is un-conjugated
Application:	Western Blotting (WB), ELISA, Immunofluorescence (IF), Immunocytochemistry (ICC)

#### Product Details

Purpose:	Mouse monoclonal antibody raised against full length recombinant GLO1.
Immunogen:	Recombinant GST fusion protein corresponding to full length human GLO1.
Clone:	Glo1a
Isotype:	IgG1
Specificity:	GLO1 (Glo1a). A band is seen ~21 KDa in WB.
Cross-Reactivity:	Human

#### Target Details

Target:	GLO1
Alternative Name:	GLO1 ( <a href="#">GLO1 Products</a> )
Background:	Full Gene Name: glyoxalase I

## Target Details

Synonyms: GLOD1, GLYI

Gene ID: 2739

UniProt: [Q04760](#)

## Application Details

Application Notes: ELISA (50 µg/1 µg protein)  
Immunofluorescence (10 µg/mL)  
Western Blot (0.5 µg/mL)  
The optimal working dilution should be determined by the end user.

Restrictions: For Research Use only

## Handling

Format: Liquid

Buffer: In Tris-glycine, 150 mM NaCl (0.05 % sodium azide)

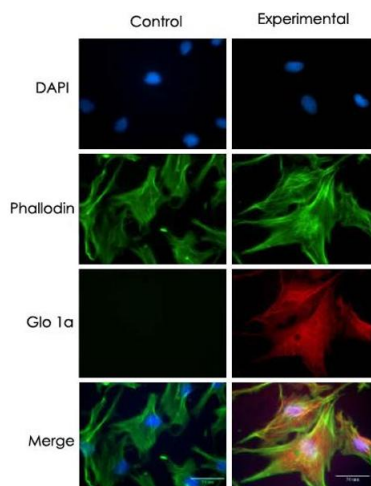
Preservative: Sodium azide

Precaution of Use: This product contains Sodium azide: a POISONOUS AND HAZARDOUS SUBSTANCE which should be handled by trained staff only.

Storage: -20 °C

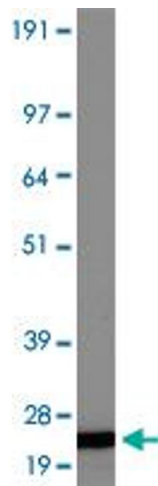
Storage Comment: Store at -20°C.  
Aliquot to avoid repeated freezing and thawing.

## Images



**Image 1.** Immunostaining of human retinal endothelial cells. Immunoreactivity for hGlx-1 was detected in human retinal endothelial cells stained with GLO1 monoclonal antibody, clone Glo1a using anti mouse IgG Texas Red as secondary Ab. The cells were counter stained with phalloidin (green) and DAPI (blue), nuclear stain. No reactivity was detected in control cells, stained without Go1a mAb. Figure is a representative of 3 independent experiments. Photo

courtesy of Dr. Nagaraj, Case Western Reserve University.



### Western Blotting

**Image 2.** Western blot on HeLa whole cell extracts with GLO1 monoclonal antibody, clone Glo1a .