

Datasheet for ABIN5578891
anti-Glutathione antibody

2 Images

[Go to Product page](#)

Overview

Quantity:	50 µg
Target:	Glutathione
Reactivity:	Please inquire
Host:	Mouse
Clonality:	Monoclonal
Conjugate:	This Glutathione antibody is un-conjugated
Application:	Western Blotting (WB), ELISA, Immunoprecipitation (IP), Immunofluorescence (IF)

Product Details

Purpose:	Mouse monoclonal antibody raised against Glutathione.
Immunogen:	Glutathione conjugated with KLH.
Clone:	L4H
Isotype:	IgG2a

Target Details

Target:	Glutathione
Abstract:	Glutathione Products
Target Type:	Chemical

Application Details

Application Notes: Western Blot (1:1000)
The optimal working dilution should be determined by the end user.

Restrictions: For Research Use only

Handling

Format: Liquid

Buffer: In PBS, pH 7.2 (0.09 % sodium azide)

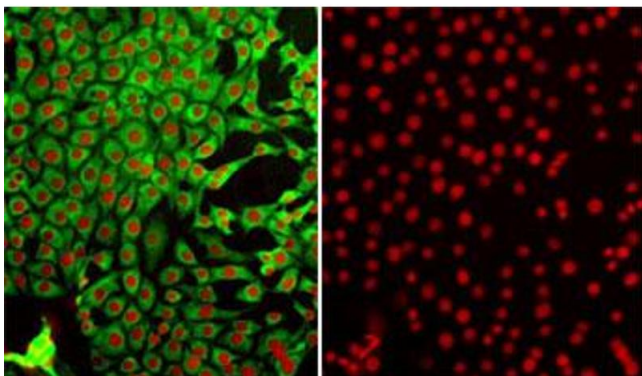
Preservative: Sodium azide

Precaution of Use: This product contains Sodium azide: a POISONOUS AND HAZARDOUS SUBSTANCE which should be handled by trained staff only.

Storage: 4 °C, -20 °C

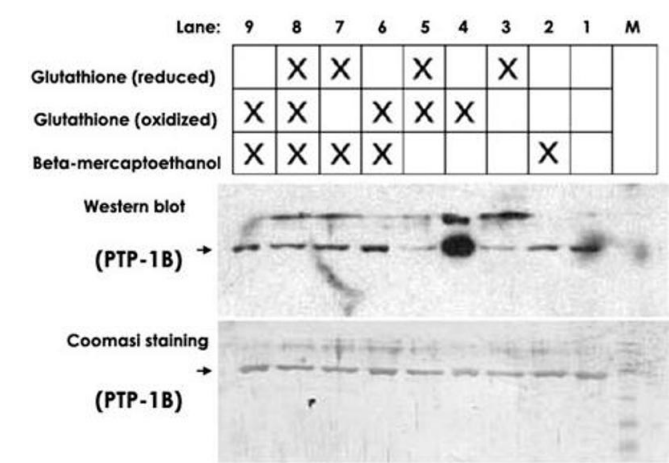
Storage Comment: Store at 4°C. For long term storage store at -20°C.
Aliquot to avoid repeated freezing and thawing.

Images



Immunofluorescence

Image 1. Immunofluorescence of HeLa cells incubated with Glutathione monoclonal antibody, clone L4H , at a 1 : 100 dilution, counterstained with FITC-labeled goat anti-mouse IgG. Red nuclear stain is DAPI.



Western Blotting

Image 2. Detection of protein-glutathione adducts on Western Blot under non-reducing conditions. PTP-1B refers to phosphotyrosine phosphatase 1B.