

Datasheet for ABIN5578902
anti-GMPPB antibody (C-Term)[Go to Product page](#)

2 Images

Overview

Quantity:	100 µL
Target:	GMPPB
Binding Specificity:	C-Term
Reactivity:	Human
Host:	Rabbit
Clonality:	Polyclonal
Conjugate:	This GMPPB antibody is un-conjugated
Application:	Western Blotting (WB), Immunohistochemistry (Paraffin-embedded Sections) (IHC (p))

Product Details

Purpose:	Rabbit polyclonal antibody raised against synthetic peptide of human GMPPB.
Immunogen:	A synthetic peptide corresponding to C-terminus of human GMPPB.
Sequence:	RCRVGQWVRM ENVTVLGEDV IVNDELYLNG ASVLPHKSIG ESVPEPRIIM
Cross-Reactivity:	Human

Target Details

Target:	GMPPB
Alternative Name:	GMPPB (GMPPB Products)
Background:	Full Gene Name: GDP-mannose pyrophosphorylase B Synonyms: KIAA1851

Target Details

Gene ID:	29925
NCBI Accession:	NM_013334

Application Details

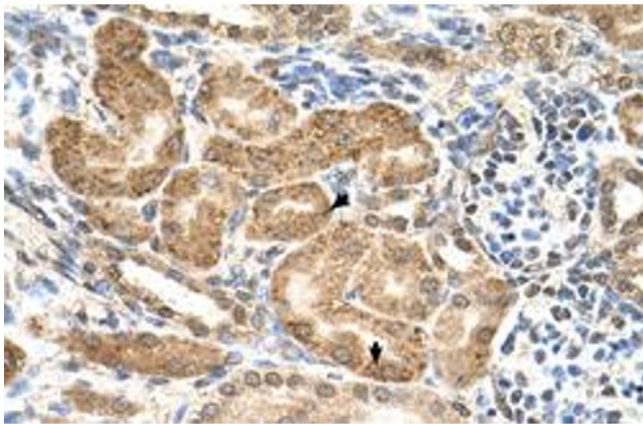
Application Notes:	Immunohistochemistry (Formalin/PFA-fixed paraffin-embedded sections) (4-8 µg/mL) Western Blot (5 µg/mL) The optimal working dilution should be determined by the end user.
--------------------	--

Restrictions:	For Research Use only
---------------	-----------------------

Handling

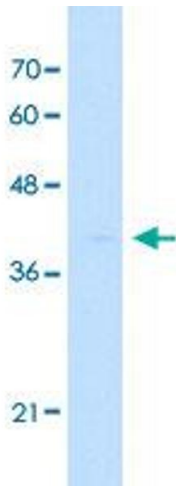
Format:	Liquid
Buffer:	In PBS (2 % sucrose, 0.09 % sodium azide).
Preservative:	Sodium azide
Precaution of Use:	This product contains Sodium azide: a POISONOUS AND HAZARDOUS SUBSTANCE which should be handled by trained staff only.
Storage:	4 °C,-20 °C
Storage Comment:	Store at 4°C. For long term storage store at -20°C. Aliquot to avoid repeated freezing and thawing.

Images



Immunohistochemistry

Image 1. Immunohistochemical staining (Formalin-fixed paraffin-embedded sections) of human kidney with GMPPB polyclonal antibody at 4-8 ug/mL working concentration.



Western Blotting

Image 2. Western Blot analysis of HepG2 cell lysate with GMPPB polyclonal antibody at 5 ug/mL working concentration.