

Datasheet for ABIN5578978

anti-GPC1 antibody**2** Images[Go to Product page](#)

Overview

Quantity:	100 µg
Target:	GPC1
Reactivity:	Human
Host:	Mouse
Clonality:	Monoclonal
Conjugate:	This GPC1 antibody is un-conjugated
Application:	Western Blotting (WB), ELISA, Immunofluorescence (IF)

Product Details

Purpose:	Mouse monoclonal antibody raised against full length recombinant GPC1.
Immunogen:	Recombinant protein corresponding to full length human GPC1.
Clone:	9E9
Isotype:	IgG1
Specificity:	This antibody recognizes native and recombinant human and mouse glypican-1.
Cross-Reactivity:	Human, Mouse

Target Details

Target:	GPC1
Alternative Name:	GPC1 (GPC1 Products)
Background:	Full Gene Name: glypican 1

Target Details

	Synonyms: FLJ38078, glypican
Gene ID:	2817
Pathways:	Glycosaminoglycan Metabolic Process , Regulation of Muscle Cell Differentiation

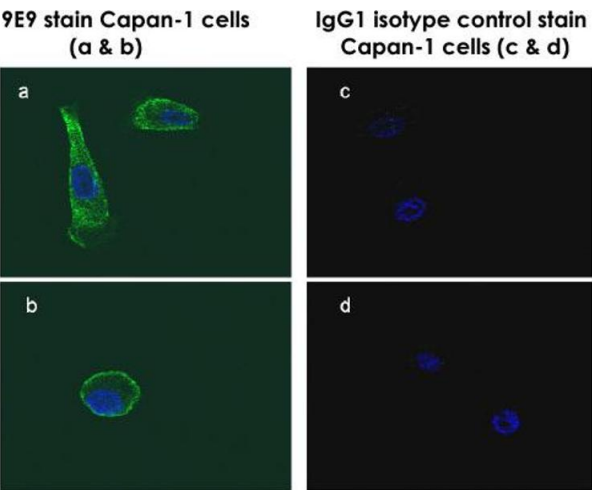
Application Details

Application Notes:	ELISA (1-5 µg/mL) The optimal working dilution should be determined by the end user.
Restrictions:	For Research Use only

Handling

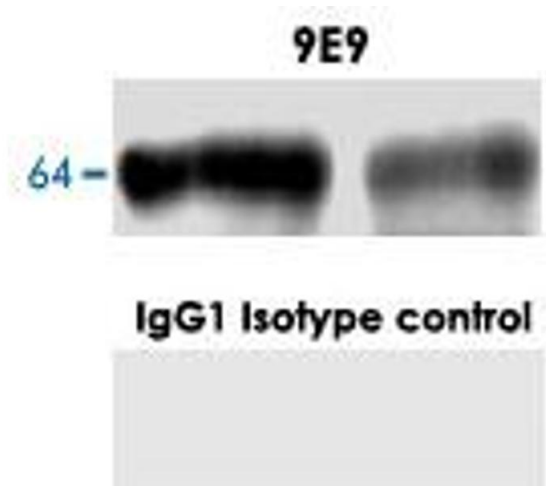
Format:	Liquid
Buffer:	In PBS, pH 7.4
Storage:	-20 °C
Storage Comment:	Store at -20°C. Aliquot to avoid repeated freezing and thawing.

Images



Western Blotting

Image 1. Immunofluorescence staining of human pancreatic carcinoma cell line Capan-1 with Western blot analysis in normal mouse brain with GPC1 monoclonal antibody, clone 9E9 .



Western Blotting

Image 2. Western blot analysis in normal mouse brain with GPC1 monoclonal antibody, clone 9E9 . A band of approx. 64 kDa is detected.