

Datasheet for ABIN5579000
anti-GPER antibody (C-Term)[Go to Product page](#)

1 Image

Overview

Quantity:	50 µg
Target:	GPER
Binding Specificity:	C-Term
Reactivity:	Human, Monkey, Dog, Gorilla
Host:	Rabbit
Clonality:	Polyclonal
Conjugate:	This GPER antibody is un-conjugated
Application:	Western Blotting (WB), Immunohistochemistry (Paraffin-embedded Sections) (IHC (p)), Immunofluorescence (IF)

Product Details

Purpose:	Rabbit polyclonal antibody raised against synthetic peptide of GPER.
Immunogen:	A synthetic peptide corresponding to 18 amino acids at C-terminus of human GPER.
Specificity:	BLAST analysis of the peptide immunogen showed no homology with other human proteins.
Cross-Reactivity:	Dog, Gorilla, Human, Monkey
Cross-Reactivity (Details):	BLAST analysis of the peptide immunogen showed no homology with other human proteins.

Target Details

Target:	GPER
Alternative Name:	GPER (GPER Products)

Target Details

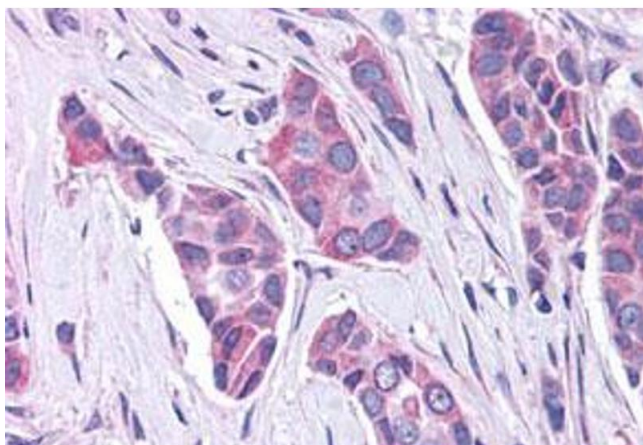
Background:	Full Gene Name: G protein-coupled estrogen receptor 1 Synonyms: CEPR,CMKRL2,DRY12,FEG-1,GPCR-Br,GPR30,LERGU,LERGU2,LyGPR,MGC99678
Gene ID:	2852
Pathways:	EGFR Signaling Pathway , Positive Regulation of Peptide Hormone Secretion , Intracellular Steroid Hormone Receptor Signaling Pathway , Steroid Hormone Mediated Signaling Pathway , Carbohydrate Homeostasis , cAMP Metabolic Process , Regulation of G-Protein Coupled Receptor Protein Signaling , Positive Regulation of Endopeptidase Activity , Regulation of Carbohydrate Metabolic Process

Application Details

Application Notes:	Immunohistochemistry (Formalin/PFA-fixed paraffin-embedded sections) (10 µg/mL) The optimal working dilution should be determined by the end user.
Restrictions:	For Research Use only

Handling

Format:	Liquid
Buffer:	In PBS (0.09 % sodium azide)
Preservative:	Sodium azide
Precaution of Use:	This product contains Sodium azide: a POISONOUS AND HAZARDOUS SUBSTANCE which should be handled by trained staff only.
Storage:	4 °C,-80 °C
Storage Comment:	Store at 4°C. For long term storage store at -80°C. Aliquot to avoid repeated freezing and thawing.



Immunohistochemistry

Image 1. Immunohistochemistry (Formalin/PFA-fixed paraffin-embedded sections) of human breast cancer tissue with GPER polyclonal antibody . Immunohistochemistry of formalin-fixed, paraffin-embedded tissue after heat-induced antigen retrieval.