

Datasheet for ABIN5579016

anti-G Protein-Coupled Receptor 1 antibody (C-Term)**1** Image[Go to Product page](#)

Overview

Quantity:	50 µg
Target:	G Protein-Coupled Receptor 1 (GPR1)
Binding Specificity:	C-Term
Reactivity:	Human, Gorilla
Host:	Rabbit
Clonality:	Polyclonal
Conjugate:	This G Protein-Coupled Receptor 1 antibody is un-conjugated
Application:	Immunohistochemistry (Paraffin-embedded Sections) (IHC (p))

Product Details

Purpose:	Rabbit polyclonal antibody raised against synthetic peptide of GPR1.
Immunogen:	A synthetic peptide corresponding to 17 amino acids at C-terminus of human GPR1.
Specificity:	BLAST analysis of the peptide immunogen showed no homology with other human proteins.
Cross-Reactivity:	Gorilla, Human
Cross-Reactivity (Details):	BLAST analysis of the peptide immunogen showed no homology with other human proteins.

Target Details

Target:	G Protein-Coupled Receptor 1 (GPR1)
Alternative Name:	GPR1 (GPR1 Products)
Background:	Full Gene Name: G protein-coupled receptor 1

Target Details

Gene ID:	2825
Pathways:	Steroid Hormone Mediated Signaling Pathway , Regulation of Carbohydrate Metabolic Process

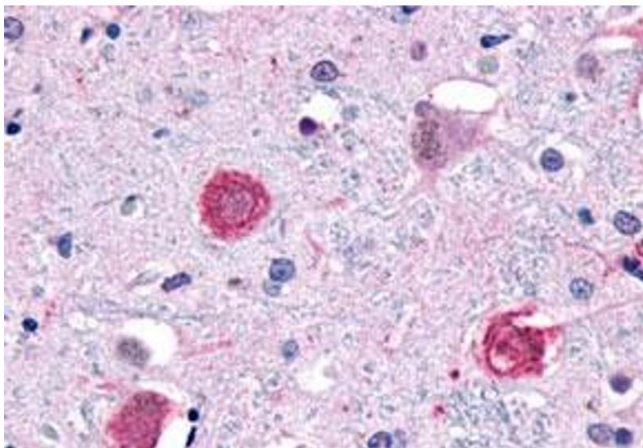
Application Details

Application Notes:	Immunohistochemistry (Formalin/PFA-fixed paraffin-embedded sections) (23-46 µg/mL) The optimal working dilution should be determined by the end user.
Restrictions:	For Research Use only

Handling

Format:	Liquid
Buffer:	In PBS (0.09 % sodium azide)
Preservative:	Sodium azide
Precaution of Use:	This product contains Sodium azide: a POISONOUS AND HAZARDOUS SUBSTANCE which should be handled by trained staff only.
Storage:	4 °C,-80 °C
Storage Comment:	Store at 4°C. For long term storage store at -80°C. Aliquot to avoid repeated freezing and thawing.

Images



Immunohistochemistry

Image 1. Immunohistochemistry (Formalin/PFA-fixed paraffin-embedded sections) of human brain, neurons and glia with GPR1 polyclonal antibody . Immunohistochemistry of formalin-fixed, paraffin-embedded tissue after heat-induced antigen retrieval.