

Datasheet for ABIN5579053

**anti-G Protein-Coupled Receptor 126 antibody (N-Term)**[Go to Product page](#)**1** Image

## Overview

Quantity:	50 µg
Target:	G Protein-Coupled Receptor 126 (GPR126)
Binding Specificity:	N-Term
Reactivity:	Human, Mouse, Rat, Gorilla, Cow, Chicken, Dog, Hamster, Horse, Monkey, Rabbit
Host:	Rabbit
Clonality:	Polyclonal
Conjugate:	This G Protein-Coupled Receptor 126 antibody is un-conjugated
Application:	Immunohistochemistry (Paraffin-embedded Sections) (IHC (p))

## Product Details

Purpose:	Rabbit polyclonal antibody raised against synthetic peptide of GPR126.
Immunogen:	A synthetic peptide corresponding to 18 amino acids at N-terminus of human GPR126.
Specificity:	BLAST analysis of the peptide immunogen showed no homology with other human proteins, except GPR64 (72 %).
Cross-Reactivity:	Chicken, Cow, Dog, Gorilla, Hamster, Horse, Human, Monkey, Mouse, Rabbit, Rat
Cross-Reactivity (Details):	BLAST analysis of the peptide immunogen showed no homology with other human proteins, except GPR64 (72 %).

## Target Details

Target:	G Protein-Coupled Receptor 126 (GPR126)
---------	---

## Target Details

Alternative Name:	GPR126 ( <a href="#">GPR126 Products</a> )
Background:	Full Gene Name: G protein-coupled receptor 126 Synonyms: APG1,DREG,PS1TP2,STQTL1,VIGR
Gene ID:	57211

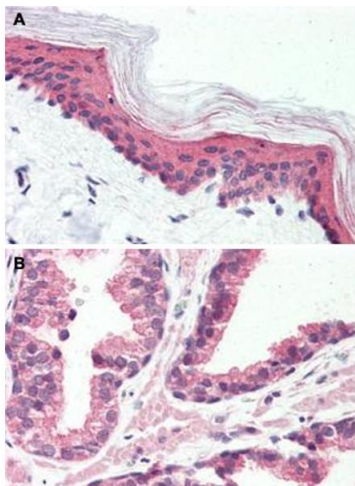
## Application Details

Application Notes:	Immunohistochemistry (Formalin/PFA-fixed paraffin-embedded sections) (10 µg/mL) The optimal working dilution should be determined by the end user.
Restrictions:	For Research Use only

## Handling

Format:	Liquid
Buffer:	In PBS (0.09 % sodium azide)
Preservative:	Sodium azide
Precaution of Use:	This product contains Sodium azide: a POISONOUS AND HAZARDOUS SUBSTANCE which should be handled by trained staff only.
Storage:	4 °C,-80 °C
Storage Comment:	Store at 4°C. For long term storage store at -80°C. Aliquot to avoid repeated freezing and thawing.

## Images



### Immunohistochemistry

**Image 1.** Immunohistochemical staining of human skin (A) and human prostate (B) with GPR126 polyclonal antibody . Immunohistochemistry of formalin-fixed, paraffin-embedded tissue after heat-induced antigen retrieval.