

Datasheet for ABIN5579056

anti-G Protein-Coupled Receptor 128 antibody (C-Term)[Go to Product page](#)**1** Image

Overview

| | |
|----------------------|---|
| Quantity: | 50 µg |
| Target: | G Protein-Coupled Receptor 128 (GPR128) |
| Binding Specificity: | C-Term |
| Reactivity: | Human, Gorilla |
| Host: | Rabbit |
| Clonality: | Polyclonal |
| Conjugate: | This G Protein-Coupled Receptor 128 antibody is un-conjugated |
| Application: | Immunohistochemistry (Paraffin-embedded Sections) (IHC (p)) |

Product Details

| | |
|-----------------------------|---|
| Purpose: | Rabbit polyclonal antibody raised against synthetic peptide of GPR128. |
| Immunogen: | A synthetic peptide corresponding to 20 amino acids at C-terminus of human GPR128. |
| Specificity: | BLAST analysis of the peptide immunogen showed no homology with other human proteins. |
| Cross-Reactivity: | Gorilla, Human |
| Cross-Reactivity (Details): | BLAST analysis of the peptide immunogen showed no homology with other human proteins. |

Target Details

| | |
|-------------------|--|
| Target: | G Protein-Coupled Receptor 128 (GPR128) |
| Alternative Name: | GPR128 (GPR128 Products) |
| Background: | Full Gene Name: G protein-coupled receptor 128 |

Target Details

Synonyms: FLJ14454,FLJ16382,FLJ29035,MGC142011,MGC163260

Gene ID: 84873

Application Details

Application Notes: Immunohistochemistry (Formalin/PFA-fixed paraffin-embedded sections) (6 µg/mL)
The optimal working dilution should be determined by the end user.

Restrictions: For Research Use only

Handling

Format: Liquid

Buffer: In PBS (0.09 % sodium azide)

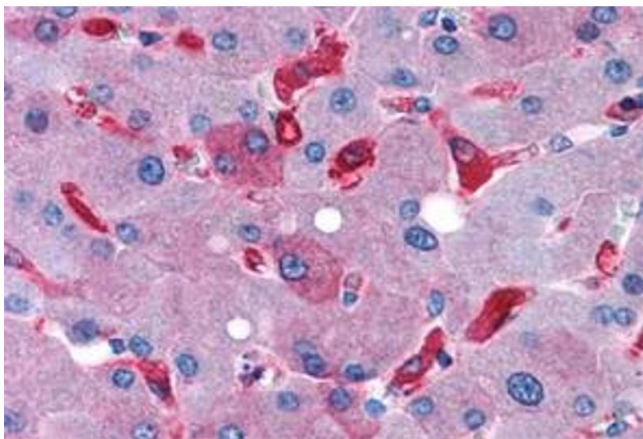
Preservative: Sodium azide

Precaution of Use: This product contains Sodium azide: a POISONOUS AND HAZARDOUS SUBSTANCE which should be handled by trained staff only.

Storage: 4 °C,-80 °C

Storage Comment: Store at 4°C. For long term storage store at -80°C.
Aliquot to avoid repeated freezing and thawing.

Images



Immunohistochemistry

Image 1. Immunohistochemical staining of human liver with GPR128 polyclonal antibody . Immunohistochemistry of formalin-fixed, paraffin-embedded tissue after heat-induced antigen retrieval.