

Datasheet for ABIN5579076

anti-GPR146 antibody (2nd Cytoplasmic Domain)[Go to Product page](#)**1** Image

Overview

Quantity:	50 µg
Target:	GPR146
Binding Specificity:	2nd Cytoplasmic Domain
Reactivity:	Human, Rat, Gorilla, Mouse, Hamster
Host:	Rabbit
Clonality:	Polyclonal
Conjugate:	This GPR146 antibody is un-conjugated
Application:	Immunohistochemistry (Paraffin-embedded Sections) (IHC (p))

Product Details

Purpose:	Rabbit polyclonal antibody raised against synthetic peptide of GPR146.
Immunogen:	A synthetic peptide corresponding to 19 amino acids at 2nd cytoplasmic domain of human GPR146.
Specificity:	BLAST analysis of the peptide immunogen showed no homology with other human proteins.
Cross-Reactivity:	Gorilla, Hamster, Human, Mouse, Rat
Cross-Reactivity (Details):	BLAST analysis of the peptide immunogen showed no homology with other human proteins.

Target Details

Target:	GPR146
Alternative Name:	GPR146 (GPR146 Products)

Target Details

Background: Full Gene Name: G protein-coupled receptor 146
Synonyms: PGR8

Gene ID: 115330

Application Details

Application Notes: Immunohistochemistry (Formalin/PFA-fixed paraffin-embedded sections) (25 µg/mL)
The optimal working dilution should be determined by the end user.

Restrictions: For Research Use only

Handling

Format: Liquid

Buffer: In PBS (0.09 % sodium azide)

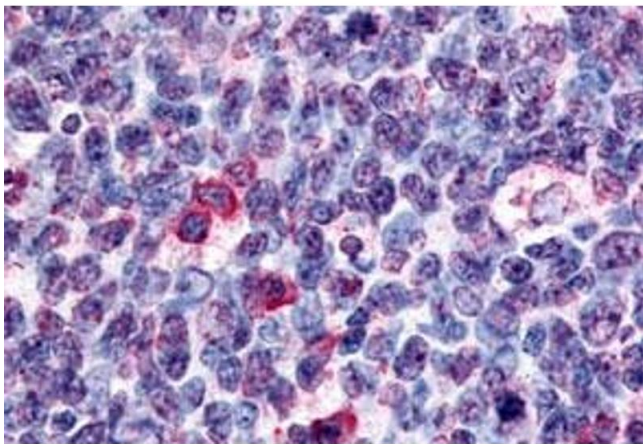
Preservative: Sodium azide

Precaution of Use: This product contains Sodium azide: a POISONOUS AND HAZARDOUS SUBSTANCE which should be handled by trained staff only.

Storage: 4 °C,-80 °C

Storage Comment: Store at 4°C. For long term storage store at -80°C.
Aliquot to avoid repeated freezing and thawing.

Images



Immunohistochemistry

Image 1. Immunohistochemistry (Formalin/PFA-fixed paraffin-embedded sections) of human tonsil germinal center tissue with GPR146 polyclonal antibody . Immunohistochemistry of formalin-fixed, paraffin-embedded tissue after heat-induced antigen retrieval.