

Datasheet for ABIN5579102

anti-GPR160 antibody[Go to Product page](#)**1** Image

Overview

Quantity:	50 µg
Target:	GPR160
Reactivity:	Human, Gorilla
Host:	Rabbit
Clonality:	Polyclonal
Conjugate:	This GPR160 antibody is un-conjugated
Application:	Immunohistochemistry (Paraffin-embedded Sections) (IHC (p))

Product Details

Purpose:	Rabbit polyclonal antibody raised against synthetic peptide of GPR160.
Immunogen:	A synthetic peptide (conjugated with KLH) corresponding to human GPR160.
Specificity:	3rd Cytoplasmic domain of human.
Cross-Reactivity:	Gorilla, Human

Target Details

Target:	GPR160
Alternative Name:	GPR160 (GPR160 Products)
Background:	Full Gene Name: G protein-coupled receptor 160 Synonyms: GPCR1,GPCR150
Gene ID:	26996

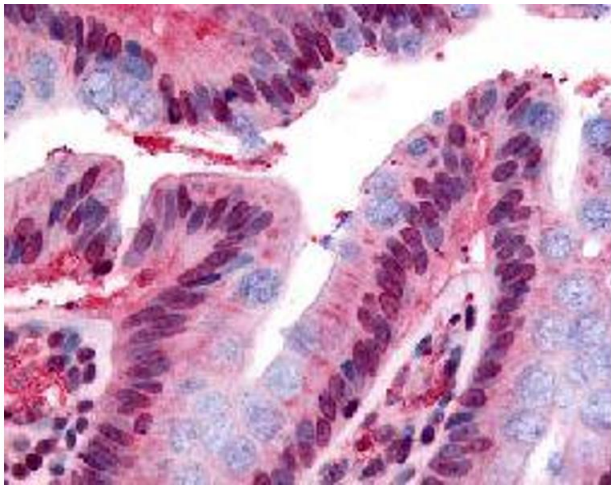
Application Details

Application Notes:	Immunohistochemistry (Formalin/PFA-fixed paraffin-embedded sections) (10 µg/mL) The optimal working dilution should be determined by the end user.
Restrictions:	For Research Use only

Handling

Format:	Liquid
Buffer:	In PBS (0.09 % sodium azide)
Preservative:	Sodium azide
Precaution of Use:	This product contains Sodium azide: a POISONOUS AND HAZARDOUS SUBSTANCE which should be handled by trained staff only.
Storage:	4 °C,-80 °C
Storage Comment:	Store at 4°C. For long term storage store at -80°C. Aliquot to avoid repeated freezing and thawing.

Images



Immunohistochemistry

Image 1. Immunohistochemical (Formalin/PFA-fixed paraffin-embedded sections) staining in human colon (epithelium) with GPR160 polyclonal antibody .