

Datasheet for ABIN5579115  
**anti-GPR173 antibody (N-Term)**[Go to Product page](#)

## 1 Image

## Overview

Quantity:	50 µg
Target:	GPR173
Binding Specificity:	N-Term
Reactivity:	Human, Monkey, Dog, Rabbit, Gorilla
Host:	Rabbit
Clonality:	Polyclonal
Conjugate:	This GPR173 antibody is un-conjugated
Application:	Immunohistochemistry (Paraffin-embedded Sections) (IHC (p))

## Product Details

Purpose:	Rabbit polyclonal antibody raised against synthetic peptide of GPR173.
Immunogen:	A synthetic peptide corresponding to 19 amino acids at N-terminus of human GPR173.
Specificity:	BLAST analysis of the peptide immunogen showed no homology with other human proteins, except MMP28 (47 %).
Cross-Reactivity:	Dog, Gorilla, Human, Monkey, Rabbit
Cross-Reactivity (Details):	BLAST analysis of the peptide immunogen showed no homology with other human proteins, except MMP28 (47 %).

## Target Details

Target:	GPR173
---------	--------

## Target Details

Alternative Name:	GPR173 ( <a href="#">GPR173 Products</a> )
Background:	Full Gene Name: G protein-coupled receptor 173 Synonyms: SREB3
Gene ID:	54328

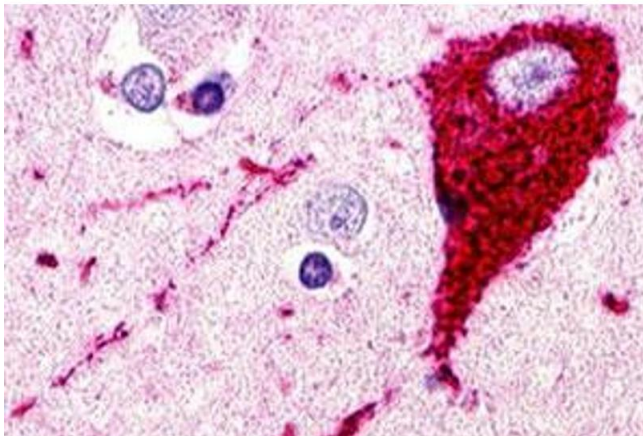
## Application Details

Application Notes:	Immunohistochemistry (Formalin/PFA-fixed paraffin-embedded sections) (6.4 µg/mL) The optimal working dilution should be determined by the end user.
Restrictions:	For Research Use only

## Handling

Format:	Liquid
Buffer:	In PBS (0.09 % sodium azide)
Preservative:	Sodium azide
Precaution of Use:	This product contains Sodium azide: a POISONOUS AND HAZARDOUS SUBSTANCE which should be handled by trained staff only.
Storage:	4 °C, -80 °C
Storage Comment:	Store at 4°C. For long term storage store at -80°C. Aliquot to avoid repeated freezing and thawing.

## Images



### Immunohistochemistry

**Image 1.** Immunohistochemical staining of human brain, neuron with GPR173 polyclonal antibody . Immunohistochemistry of formalin-fixed, paraffin-embedded tissue after heat-induced antigen retrieval.