

Datasheet for ABIN5579116

anti-GPR173 antibody[Go to Product page](#)**1** Image

Overview

Quantity:	50 µg
Target:	GPR173
Reactivity:	Human, Mouse, Rat, Cow, Monkey, Dog, Rabbit, Hamster, Gorilla
Host:	Rabbit
Clonality:	Polyclonal
Conjugate:	This GPR173 antibody is un-conjugated
Application:	Immunohistochemistry (Paraffin-embedded Sections) (IHC (p))

Product Details

Purpose:	Rabbit polyclonal antibody raised against synthetic peptide of GPR173.
Immunogen:	A synthetic peptide corresponding to 19 amino acids at transmembrane domain of human GPR173.
Specificity:	BLAST analysis of the peptide immunogen showed no homology with other human proteins.
Cross-Reactivity:	Cow, Dog, Gorilla, Hamster, Human, Monkey, Mouse, Rabbit, Rat
Cross-Reactivity (Details):	BLAST analysis of the peptide immunogen showed no homology with other human proteins.

Target Details

Target:	GPR173
Alternative Name:	GPR173 (GPR173 Products)
Background:	Full Gene Name: G protein-coupled receptor 173

Target Details

Synonyms: SREB3

Gene ID: 54328

Application Details

Application Notes: Immunohistochemistry (Formalin/PFA-fixed paraffin-embedded sections) (2 µg/mL)
The optimal working dilution should be determined by the end user.

Restrictions: For Research Use only

Handling

Format: Liquid

Buffer: In PBS (0.09 % sodium azide)

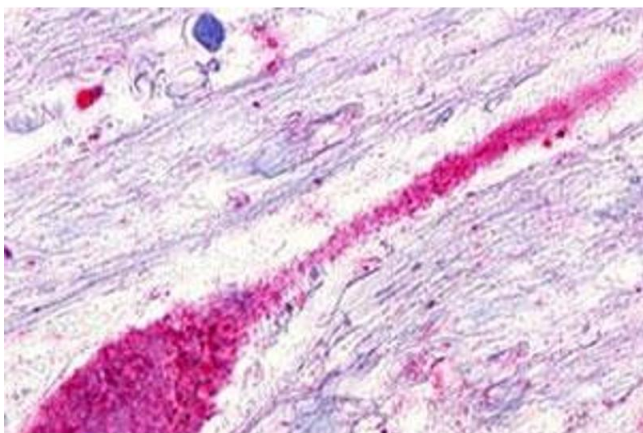
Preservative: Sodium azide

Precaution of Use: This product contains Sodium azide: a POISONOUS AND HAZARDOUS SUBSTANCE which should be handled by trained staff only.

Storage: 4 °C, -80 °C

Storage Comment: Store at 4°C. For long term storage store at -80°C.
Aliquot to avoid repeated freezing and thawing.

Images



Immunohistochemistry

Image 1. Immunohistochemical staining of human brain, neuron with GPR173 polyclonal antibody . Immunohistochemistry of formalin-fixed, paraffin-embedded tissue after heat-induced antigen retrieval.