

Datasheet for ABIN5579127

anti-G Protein-Coupled Receptor 182 antibody[Go to Product page](#)**1** Image

Overview

Quantity:	50 µg
Target:	G Protein-Coupled Receptor 182 (GPR182)
Reactivity:	Human, Mouse, Rat, Monkey, Gorilla
Host:	Rabbit
Clonality:	Polyclonal
Conjugate:	This G Protein-Coupled Receptor 182 antibody is un-conjugated
Application:	Immunohistochemistry (Paraffin-embedded Sections) (IHC (p))

Product Details

Purpose:	Rabbit polyclonal antibody raised against synthetic peptide of GPR182.
Immunogen:	A synthetic peptide (conjugated with KLH) corresponding to human GPR182.
Specificity:	2nd extracellular domain of human.
Cross-Reactivity:	Gorilla, Human, Monkey, Mouse, Rat

Target Details

Target:	G Protein-Coupled Receptor 182 (GPR182)
Alternative Name:	GPR182 (GPR182 Products)
Background:	Full Gene Name: G protein-coupled receptor 182 Synonyms: 7TMR,ADMR,AM-R,AMR,G10D,MGC34399,gamrh,hrhAMR
Gene ID:	11318

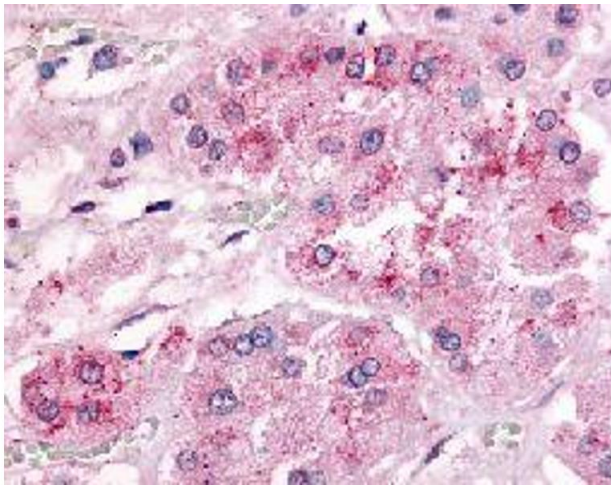
Application Details

Application Notes:	Immunohistochemistry (Formalin/PFA-fixed paraffin-embedded sections) (20 µg/mL) The optimal working dilution should be determined by the end user.
Restrictions:	For Research Use only

Handling

Format:	Liquid
Buffer:	In PBS (0.09 % sodium azide)
Preservative:	Sodium azide
Precaution of Use:	This product contains Sodium azide: a POISONOUS AND HAZARDOUS SUBSTANCE which should be handled by trained staff only.
Storage:	4 °C,-80 °C
Storage Comment:	Store at 4°C. For long term storage store at -80°C. Aliquot to avoid repeated freezing and thawing.

Images



Immunohistochemistry

Image 1. Immunohistochemical (Formalin/PFA-fixed paraffin-embedded sections) staining in human adrenal gland with GPR182 polyclonal antibody .