

Datasheet for ABIN5579132

anti-G Protein-Coupled Receptor 182 antibody[Go to Product page](#)**1** Image

Overview

Quantity:	100 µg
Target:	G Protein-Coupled Receptor 182 (GPR182)
Reactivity:	Human, Mouse, Rat
Host:	Rabbit
Clonality:	Polyclonal
Conjugate:	This G Protein-Coupled Receptor 182 antibody is un-conjugated
Application:	Western Blotting (WB), ELISA, Immunohistochemistry (IHC)

Product Details

Purpose:	Rabbit polyclonal antibody raised against synthetic protein of GPR182.
Immunogen:	Synthetic protein corresponding to human GPR182.
Cross-Reactivity:	Human, Mouse, Rat

Target Details

Target:	G Protein-Coupled Receptor 182 (GPR182)
Alternative Name:	GPR182 (GPR182 Products)
Background:	Full Gene Name: G protein-coupled receptor 182 Synonyms: 7TMR,ADMR,AM-R,AMR,G10D,MGC34399,gamrh,hrhAMR
Gene ID:	11318

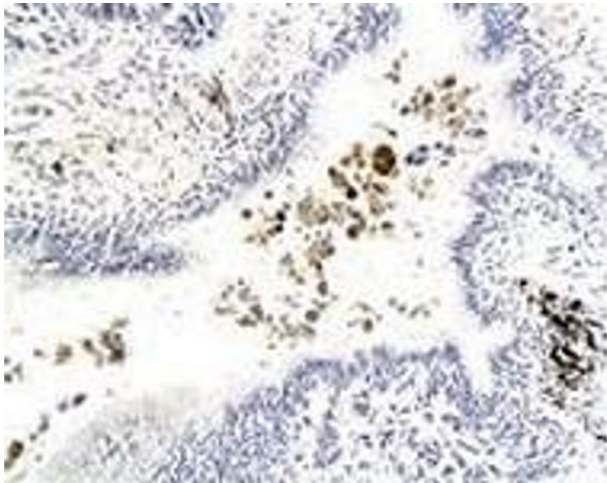
Application Details

Application Notes:	ELISA (1-2 µg/mL) Western Blot (2-10 µg/mL) Immunohistochemistry (2-10 µg/mL) The optimal working dilution should be determined by the end user.
Restrictions:	For Research Use only

Handling

Format:	Lyophilized
Buffer:	Lyophilized from PBS.
Storage:	4 °C,-20 °C
Storage Comment:	Store at -20°C on dry atmosphere. After reconstitution with deionized water, store at 4°C for one month. For long term storage store at -20°C. Aliquot to avoid repeated freezing and thawing.

Images



Immunohistochemistry

Image 1. Immunohistochemical staining of human lung carcinoma tissue section with GPR182 polyclonal antibody at 1:200 dilution.