

Datasheet for ABIN5579136
anti-GPR20 antibody (3rd Cytoplasmic Domain)[Go to Product page](#)

1 Image

Overview

Quantity:	50 µg
Target:	GPR20
Binding Specificity:	3rd Cytoplasmic Domain
Reactivity:	Human, Mouse, Rat, Cow
Host:	Rabbit
Clonality:	Polyclonal
Conjugate:	This GPR20 antibody is un-conjugated
Application:	Immunohistochemistry (Paraffin-embedded Sections) (IHC (p))

Product Details

Purpose:	Rabbit polyclonal antibody raised against synthetic peptide of GPR20.
Immunogen:	A synthetic peptide corresponding to 18 amino acids to 3rd cytoplasmic domain of human GPR20.
Specificity:	3rd cytoplasmic domain of human. Predicted crossreactivity with mouse and rat due to sequence similarity.
Cross-Reactivity:	Cow, Human, Mouse, Rat

Target Details

Target:	GPR20
Alternative Name:	GPR20 (GPR20 Products)

Target Details

Background:	Full Gene Name: G protein-coupled receptor 20
Gene ID:	2843

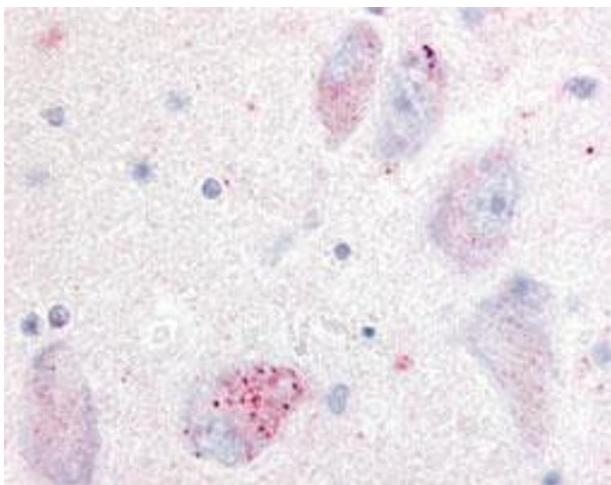
Application Details

Application Notes:	Immunohistochemistry (Formalin/PFA-fixed paraffin-embedded sections) (20 µg/mL) The optimal working dilution should be determined by the end user.
Restrictions:	For Research Use only

Handling

Format:	Liquid
Buffer:	In PBS (0.09 % sodium azide)
Preservative:	Sodium azide
Precaution of Use:	This product contains Sodium azide: a POISONOUS AND HAZARDOUS SUBSTANCE which should be handled by trained staff only.
Storage:	4 °C,-80 °C
Storage Comment:	Store at 4°C. For long term storage store at -80°C. Aliquot to avoid repeated freezing and thawing.

Images



Immunohistochemistry

Image 1. Immunohistochemical (Formalin/PFA-fixed paraffin-embedded sections) staining of human nucleus basalis of meynert with GPR20 polyclonal antibody .