

Datasheet for ABIN5579142

anti-GPR21 antibody[Go to Product page](#)**1** Image

Overview

Quantity:	50 µg
Target:	GPR21
Reactivity:	Human, Mouse, Pig, Rat, Cow, Gorilla, Monkey, Dog
Host:	Rabbit
Clonality:	Polyclonal
Conjugate:	This GPR21 antibody is un-conjugated
Application:	Immunohistochemistry (Paraffin-embedded Sections) (IHC (p))

Product Details

Purpose:	Rabbit polyclonal antibody raised against synthetic peptide of GPR21.
Immunogen:	A synthetic peptide (conjugated with KLH) corresponding to human GPR21.
Specificity:	C-terminal domain of human. Predicted crossreactivity with mouse due to sequence similarity.
Cross-Reactivity:	Cow, Dog, Gorilla, Human, Monkey, Mouse, Pig, Rat

Target Details

Target:	GPR21
Alternative Name:	GPR21 (GPR21 Products)
Background:	Full Gene Name: G protein-coupled receptor 21
Gene ID:	2844
Pathways:	Carbohydrate Homeostasis

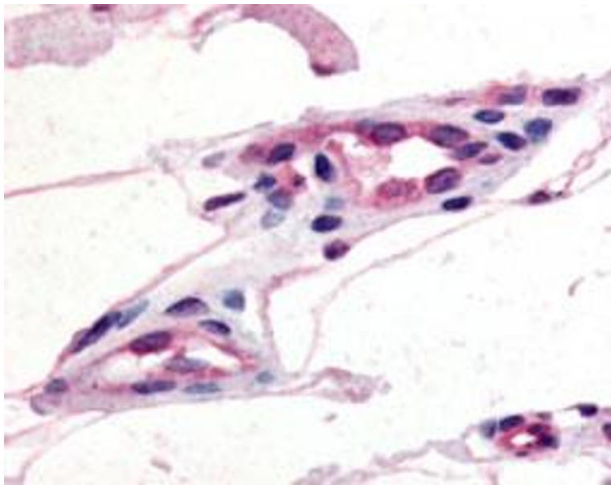
Application Details

Application Notes:	Immunohistochemistry (Formalin/PFA-fixed paraffin-embedded sections) (5 µg/mL) The optimal working dilution should be determined by the end user.
Restrictions:	For Research Use only

Handling

Format:	Liquid
Buffer:	In PBS (0.09 % sodium azide)
Preservative:	Sodium azide
Precaution of Use:	This product contains Sodium azide: a POISONOUS AND HAZARDOUS SUBSTANCE which should be handled by trained staff only.
Storage:	4 °C,-80 °C
Storage Comment:	Store at 4°C. For long term storage store at -80°C. Aliquot to avoid repeated freezing and thawing.

Images



Immunohistochemistry

Image 1. Immunohistochemical (Formalin/PFA-fixed paraffin-embedded sections) staining of human capillaries with GPR21 polyclonal antibody .