

Datasheet for ABIN5579144

anti-GPR22 antibody[Go to Product page](#)**1** Image

Overview

Quantity:	50 µg
Target:	GPR22
Reactivity:	Human, Mouse, Rat, Horse, Cow, Pig, Monkey, Rabbit, Chicken, Zebrafish (Danio rerio), Hamster, Xenopus laevis, Gorilla
Host:	Rabbit
Clonality:	Polyclonal
Conjugate:	This GPR22 antibody is un-conjugated
Application:	Immunohistochemistry (Paraffin-embedded Sections) (IHC (p))

Product Details

Purpose:	Rabbit polyclonal antibody raised against synthetic peptide of GPR22.
Immunogen:	A synthetic peptide (conjugated with KLH) corresponding to human GPR22.
Specificity:	C-terminal cytoplasmic domain of human. Predicted crossreactivity with mouse due to sequence similarity .
Cross-Reactivity:	Chicken, Cow, Gorilla, Hamster, Horse, Human, Monkey, Mouse, Pig, Rabbit, Rat, Xenopus laevis, Zebrafish (Danio rerio)

Target Details

Target:	GPR22
Alternative Name:	GPR22 (GPR22 Products)
Background:	Full Gene Name: G protein-coupled receptor 22

Target Details

Synonyms: MGC129847

Gene ID: 2845

Application Details

Application Notes: Immunohistochemistry (Formalin/PFA-fixed paraffin-embedded sections) (10 µg/mL)
The optimal working dilution should be determined by the end user.

Restrictions: For Research Use only

Handling

Format: Liquid

Buffer: In PBS (0.09 % sodium azide)

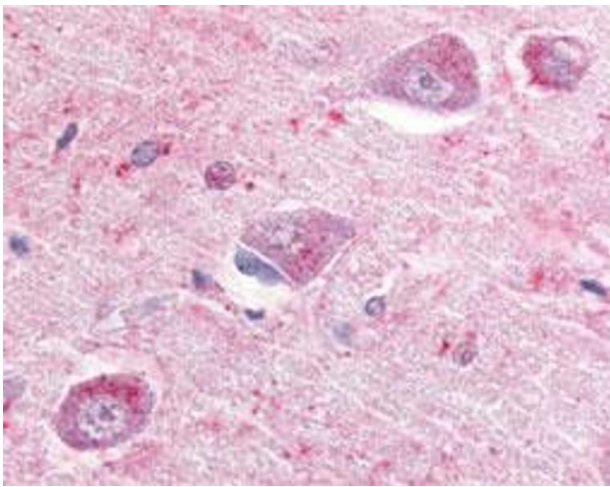
Preservative: Sodium azide

Precaution of Use: This product contains Sodium azide: a POISONOUS AND HAZARDOUS SUBSTANCE which should be handled by trained staff only.

Storage: 4 °C,-80 °C

Storage Comment: Store at 4°C. For long term storage store at -80°C.
Aliquot to avoid repeated freezing and thawing.

Images



Immunohistochemistry

Image 1. Immunohistochemical (Formalin/PFA-fixed paraffin-embedded sections) staining of human hippocampus with GPR22 polyclonal antibody .