

## Datasheet for ABIN5579149 **anti-GPR27 antibody (Cytoplasmic Domain)**

[Go to Product page](#)

### 1 Image

#### Overview

Quantity:	50 µg
Target:	GPR27
Binding Specificity:	Cytoplasmic Domain
Reactivity:	Human, Rat, Mouse
Host:	Rabbit
Clonality:	Polyclonal
Conjugate:	This GPR27 antibody is un-conjugated
Application:	Immunohistochemistry (Paraffin-embedded Sections) (IHC (p))

#### Product Details

Purpose:	Rabbit polyclonal antibody raised against synthetic peptide of GPR27.
Immunogen:	A synthetic peptide corresponding to 19 amino acids at cytoplasmic domain of human GPR27.
Specificity:	BLAST analysis of the peptide immunogen showed no homology with other human proteins.
Cross-Reactivity:	Human, Mouse, Rat
Cross-Reactivity (Details):	BLAST analysis of the peptide immunogen showed no homology with other human proteins.

#### Target Details

Target:	GPR27
Alternative Name:	GPR27 ( <a href="#">GPR27 Products</a> )
Background:	Full Gene Name: G protein-coupled receptor 27

## Target Details

Synonyms: SREB1

Gene ID: 2850

## Application Details

Application Notes: Immunohistochemistry (Formalin/PFA-fixed paraffin-embedded sections) (5 µg/mL)  
The optimal working dilution should be determined by the end user.

Restrictions: For Research Use only

## Handling

Format: Liquid

Buffer: In PBS (0.09 % sodium azide)

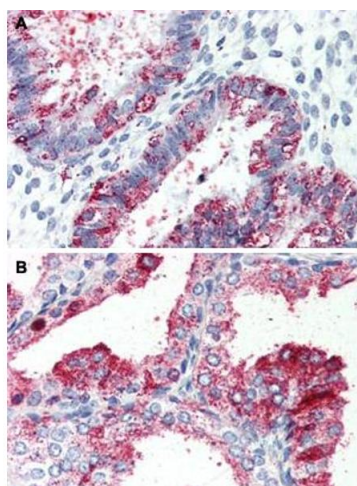
Preservative: Sodium azide

Precaution of Use: This product contains Sodium azide: a POISONOUS AND HAZARDOUS SUBSTANCE which should be handled by trained staff only.

Storage: 4 °C, -80 °C

Storage Comment: Store at 4°C. For long term storage store at -80°C.  
Aliquot to avoid repeated freezing and thawing.

## Images



### Immunohistochemistry

**Image 1.** Immunohistochemical staining of human uterus (A) and human prostate (B) with GPR27 polyclonal antibody . Immunohistochemistry of formalin-fixed, paraffin-embedded tissue after heat-induced antigen retrieval.