

Datasheet for ABIN5579153  
**anti-GPR3 antibody (1st Extracellular Domain)**[Go to Product page](#)

## 1 Image

## Overview

Quantity:	50 µg
Target:	GPR3
Binding Specificity:	1st Extracellular Domain
Reactivity:	Human, Mouse, Pig, Gorilla
Host:	Rabbit
Clonality:	Polyclonal
Conjugate:	This GPR3 antibody is un-conjugated
Application:	Immunohistochemistry (Paraffin-embedded Sections) (IHC (p))

## Product Details

Purpose:	Rabbit polyclonal antibody raised against synthetic peptide of GPR3.
Immunogen:	A synthetic peptide corresponding to 15 amino acids at 1st extracellular domain of human GPR3.
Specificity:	BLAST analysis of the peptide immunogen showed no homology with other human proteins, except SPPL2A (60 %).
Cross-Reactivity:	Gorilla, Human, Mouse, Pig
Cross-Reactivity (Details):	BLAST analysis of the peptide immunogen showed no homology with other human proteins, except SPPL2A (60 %).

## Target Details

Target:	GPR3
---------	------

## Target Details

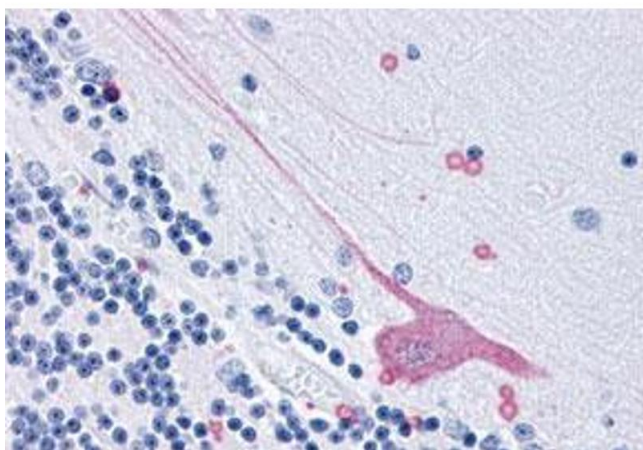
Alternative Name:	GPR3 ( <a href="#">GPR3 Products</a> )
Background:	Full Gene Name: G protein-coupled receptor 3 Synonyms: ACCA
Gene ID:	2827
Pathways:	<a href="#">cAMP Metabolic Process</a>

## Application Details

Application Notes:	Immunohistochemistry (Formalin/PFA-fixed paraffin-embedded sections) (6 µg/mL) The optimal working dilution should be determined by the end user.
Restrictions:	For Research Use only

## Handling

Format:	Liquid
Buffer:	In PBS (0.09 % sodium azide)
Preservative:	Sodium azide
Precaution of Use:	This product contains Sodium azide: a POISONOUS AND HAZARDOUS SUBSTANCE which should be handled by trained staff only.
Storage:	4 °C,-80 °C
Storage Comment:	Store at 4°C. For long term storage store at -80°C. Aliquot to avoid repeated freezing and thawing.



#### Immunohistochemistry

**Image 1.** Immunohistochemistry (Formalin/PFA-fixed paraffin-embedded sections) of human brain tissue with GPR3 polyclonal antibody . Immunohistochemistry of formalin-fixed, paraffin-embedded tissue after heat-induced antigen retrieval.