

Datasheet for ABIN5579154 anti-GPR3 antibody (2nd Extracellular Domain)

[Go to Product page](#)

1 Image

Overview

Quantity:	50 µg
Target:	GPR3
Binding Specificity:	2nd Extracellular Domain
Reactivity:	Human, Mouse, Rat, Monkey, Gorilla, Hamster
Host:	Rabbit
Clonality:	Polyclonal
Conjugate:	This GPR3 antibody is un-conjugated
Application:	Immunohistochemistry (Paraffin-embedded Sections) (IHC (p))

Product Details

Purpose:	Rabbit polyclonal antibody raised against synthetic peptide of GPR3.
Immunogen:	A synthetic peptide corresponding to 15 amino acids at 2nd extracellular domain of human GPR3.
Specificity:	BLAST analysis of the peptide immunogen showed no homology with other human proteins.
Cross-Reactivity:	Gorilla, Hamster, Human, Monkey, Mouse, Rat
Cross-Reactivity (Details):	BLAST analysis of the peptide immunogen showed no homology with other human proteins.

Target Details

Target:	GPR3
Alternative Name:	GPR3 (GPR3 Products)

Target Details

Background:	Full Gene Name: G protein-coupled receptor 3 Synonyms: ACCA
Gene ID:	2827
Pathways:	cAMP Metabolic Process

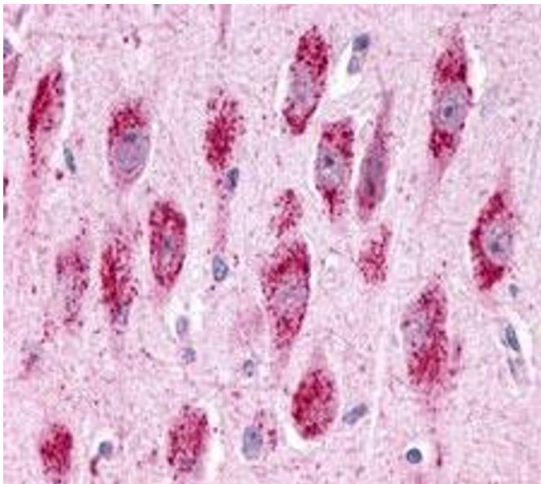
Application Details

Application Notes:	Immunohistochemistry (Formalin/PFA-fixed paraffin-embedded sections) (6 µg/mL) The optimal working dilution should be determined by the end user.
Restrictions:	For Research Use only

Handling

Format:	Liquid
Buffer:	In PBS (0.09 % sodium azide)
Preservative:	Sodium azide
Precaution of Use:	This product contains Sodium azide: a POISONOUS AND HAZARDOUS SUBSTANCE which should be handled by trained staff only.
Storage:	4 °C, -80 °C
Storage Comment:	Store at 4°C. For long term storage store at -80°C. Aliquot to avoid repeated freezing and thawing.

Images



Immunohistochemistry

Image 1. Immunohistochemistry (Formalin/PFA-fixed paraffin-embedded sections) of human brain, neurons and glia with GPR3 polyclonal antibody . Immunohistochemistry of formalin-fixed, paraffin-embedded tissue after heat-induced antigen retrieval.