

Datasheet for ABIN5579179
anti-GPR4 antibody (C-Term)[Go to Product page](#)

2 Images

Overview

Quantity:	50 µg
Target:	GPR4
Binding Specificity:	C-Term
Reactivity:	Human, Dog, Monkey, Gorilla
Host:	Rabbit
Clonality:	Polyclonal
Conjugate:	This GPR4 antibody is un-conjugated
Application:	Immunohistochemistry (Paraffin-embedded Sections) (IHC (p)), Immunocytochemistry (ICC)

Product Details

Purpose:	Rabbit polyclonal antibody raised against synthetic peptide of GPR4.
Immunogen:	A synthetic peptide corresponding to 19 amino acids at C-terminus of human GPR4.
Specificity:	BLAST analysis of the peptide immunogen showed no homology with other human proteins.
Cross-Reactivity:	Dog, Gorilla, Human, Monkey
Cross-Reactivity (Details):	BLAST analysis of the peptide immunogen showed no homology with other human proteins.

Target Details

Target:	GPR4
Alternative Name:	GPR4 (GPR4 Products)
Background:	Full Gene Name: G protein-coupled receptor 4

Target Details

Gene ID: 2828

Application Details

Application Notes: Immunohistochemistry (Formalin/PFA-fixed paraffin-embedded sections) (24 µg/mL)
The optimal working dilution should be determined by the end user.

Restrictions: For Research Use only

Handling

Format: Liquid

Buffer: In PBS (0.09 % sodium azide)

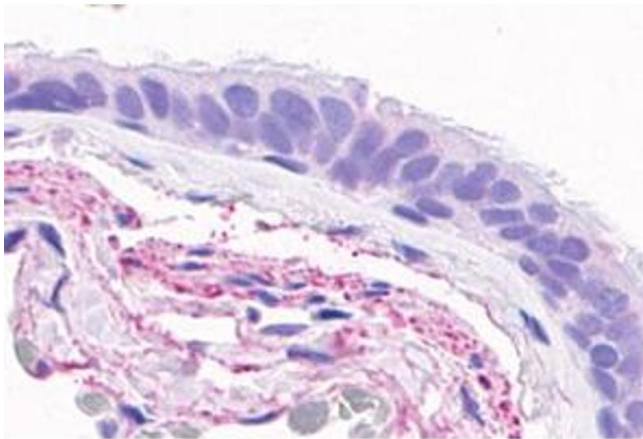
Preservative: Sodium azide

Precaution of Use: This product contains Sodium azide: a POISONOUS AND HAZARDOUS SUBSTANCE which should be handled by trained staff only.

Storage: 4 °C, -80 °C

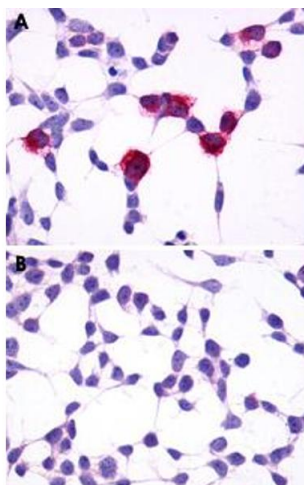
Storage Comment: Store at 4°C. For long term storage store at -80°C.
Aliquot to avoid repeated freezing and thawing.

Images



Immunohistochemistry

Image 1. Immunohistochemical staining of human lung, respiratory epithelium with GPR4 polyclonal antibody . Immunohistochemistry of formalin-fixed, paraffin-embedded tissue after heat-induced antigen retrieval.



Immunocytochemistry

Image 2. Immunocytochemical staining of HEK293 human embryonic kidney cells transfected (A) and untransfected (B) with GPR4. Primary antibody using GPR4 polyclonal antibody .