

Datasheet for ABIN5579191
anti-GPR50 antibody (C-Term)[Go to Product page](#)

1 Image

Overview

Quantity:	50 µg
Target:	GPR50
Binding Specificity:	C-Term
Reactivity:	Human, Monkey, Gorilla
Host:	Rabbit
Clonality:	Polyclonal
Conjugate:	This GPR50 antibody is un-conjugated
Application:	Immunohistochemistry (Paraffin-embedded Sections) (IHC (p))

Product Details

Purpose:	Rabbit polyclonal antibody raised against synthetic peptide of GPR50.
Immunogen:	A synthetic peptide corresponding to 18 amino acids from C-terminus of human GPR50.
Specificity:	BLAST analysis of the peptide immunogen showed no homology with other human proteins.
Cross-Reactivity:	Gorilla, Human, Monkey
Cross-Reactivity (Details):	BLAST analysis of the peptide immunogen showed no homology with other human proteins.

Target Details

Target:	GPR50
Alternative Name:	GPR50 (GPR50 Products)
Background:	Full Gene Name: G protein-coupled receptor 50

Target Details

Synonyms: H9,MGC125342,Mel1c

Gene ID: 9248

Application Details

Application Notes: Immunohistochemistry (Formalin/PFA-fixed paraffin-embedded sections) (20 µg/mL)
The optimal working dilution should be determined by the end user.

Restrictions: For Research Use only

Handling

Format: Liquid

Buffer: In PBS (0.09 % sodium azide)

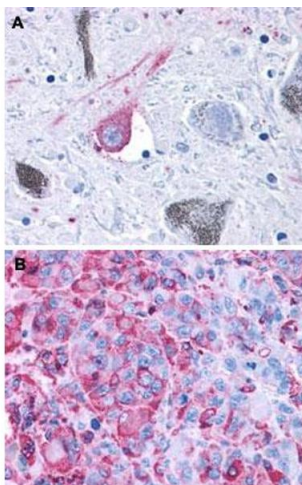
Preservative: Sodium azide

Precaution of Use: This product contains Sodium azide: a POISONOUS AND HAZARDOUS SUBSTANCE which should be handled by trained staff only.

Storage: 4 °C,-80 °C

Storage Comment: Store at 4°C. For long term storage store at -80°C.
Aliquot to avoid repeated freezing and thawing.

Images



Immunohistochemistry

Image 1. Immunohistochemical (Formalin/PFA-fixed paraffin-embedded sections) staining in human brain, substantia nigra (A) and human melanoma (B) with GPR50 polyclonal antibody .