



Datasheet for ABIN5579198

## anti-GPR61 antibody



[Go to Product page](#)

### 1 Image

#### Overview

Quantity:	50 µg
Target:	GPR61
Reactivity:	Human, Mouse, Monkey, Pig, Cow, Horse, Rat, Gorilla
Host:	Rabbit
Clonality:	Polyclonal
Conjugate:	This GPR61 antibody is un-conjugated
Application:	Immunohistochemistry (Paraffin-embedded Sections) (IHC (p))

#### Product Details

Purpose:	Rabbit polyclonal antibody raised against synthetic peptide of GPR61.
Immunogen:	A synthetic peptide (conjugated with KLH) corresponding to human GPR61.
Specificity:	2nd Cytoplasmic domain of human.
Cross-Reactivity:	Cow, Gorilla, Horse, Human, Monkey, Mouse, Pig, Rat

#### Target Details

Target:	GPR61
Alternative Name:	GPR61 ( <a href="#">GPR61 Products</a> )
Background:	Full Gene Name: G protein-coupled receptor 61 Synonyms: BALGR,GPCR3
Gene ID:	83873

## Application Details

---

Application Notes: Immunohistochemistry (Formalin/PFA-fixed paraffin-embedded sections) (20 µg/mL)  
The optimal working dilution should be determined by the end user.

---

Restrictions: For Research Use only

---

## Handling

---

Format: Liquid

---

Buffer: In PBS (0.09 % sodium azide)

---

Preservative: Sodium azide

---

Precaution of Use: This product contains Sodium azide: a POISONOUS AND HAZARDOUS SUBSTANCE which should be handled by trained staff only.

---

Storage: 4 °C,-80 °C

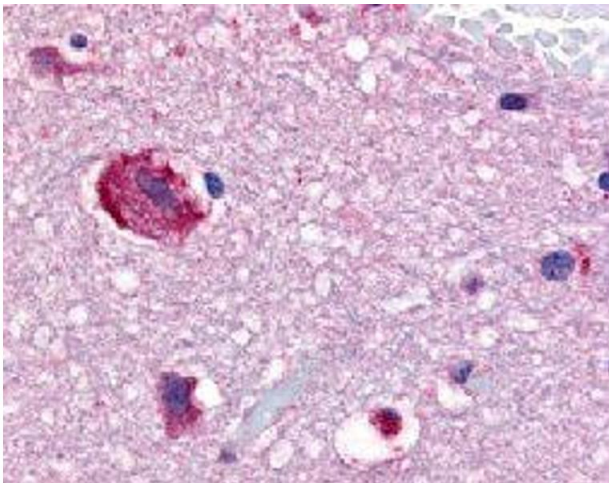
---

Storage Comment: Store at 4°C. For long term storage store at -80°C.  
Aliquot to avoid repeated freezing and thawing.

---

## Images

---



### Immunohistochemistry

**Image 1.** Immunohistochemical (Formalin/PFA-fixed paraffin-embedded sections) staining in human brain (caudate) with GPR61 polyclonal antibody .