

Datasheet for ABIN5579206 anti-GPR63 antibody (Cytoplasmic Domain)

[Go to Product page](#)

1 Image

Overview

| | |
|----------------------|---|
| Quantity: | 50 µg |
| Target: | GPR63 |
| Binding Specificity: | Cytoplasmic Domain |
| Reactivity: | Human, Mouse, Cow, Rat, Horse, Pig, Monkey, Gorilla, Chicken, Dog, Rabbit, Xenopus laevis |
| Host: | Rabbit |
| Clonality: | Polyclonal |
| Conjugate: | This GPR63 antibody is un-conjugated |
| Application: | Immunohistochemistry (Paraffin-embedded Sections) (IHC (p)) |

Product Details

| | |
|-----------------------------|--|
| Purpose: | Rabbit polyclonal antibody raised against synthetic peptide of GPR63. |
| Immunogen: | A synthetic peptide corresponding to 14 amino acids at cytoplasmic domain of human GPR63. |
| Specificity: | BLAST analysis of the peptide immunogen showed no homology with other human proteins, except GPR45 (71 %). |
| Cross-Reactivity: | Chicken, Cow, Dog, Gorilla, Horse, Human, Monkey, Mouse, Pig, Rabbit, Rat, Xenopus laevis |
| Cross-Reactivity (Details): | BLAST analysis of the peptide immunogen showed no homology with other human proteins, except GPR45 (71 %). |

Target Details

| | |
|---------|-------|
| Target: | GPR63 |
|---------|-------|

Target Details

| | |
|-------------------|---|
| Alternative Name: | GPR63 (GPR63 Products) |
| Background: | Full Gene Name: G protein-coupled receptor 63 Synonyms: PSP24(beta),PSP24B |
| Gene ID: | 81491 |

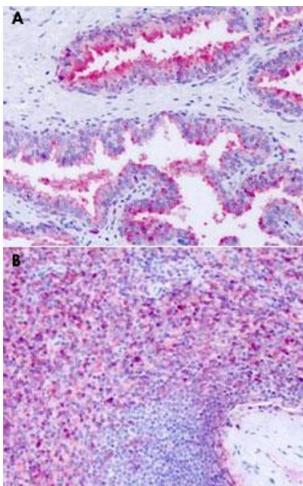
Application Details

| | |
|--------------------|---|
| Application Notes: | Immunohistochemistry (Formalin/PFA-fixed paraffin-embedded sections) (13 µg/mL) The optimal working dilution should be determined by the end user. |
| Restrictions: | For Research Use only |

Handling

| | |
|--------------------|--|
| Format: | Liquid |
| Buffer: | In PBS (0.09 % sodium azide) |
| Preservative: | Sodium azide |
| Precaution of Use: | This product contains Sodium azide: a POISONOUS AND HAZARDOUS SUBSTANCE which should be handled by trained staff only. |
| Storage: | 4 °C,-80 °C |
| Storage Comment: | Store at 4°C. For long term storage store at -80°C. Aliquot to avoid repeated freezing and thawing. |

Images



Immunohistochemistry

Image 1. Immunohistochemical staining of formalin-fixed paraffin-embedded human prostate (A) and human spleen (B) with GPR63 polyclonal antibody .