

Datasheet for ABIN5579209
anti-GPR63 antibody (Extracellular Domain)[Go to Product page](#)

1 Image

Overview

Quantity:	50 µg
Target:	GPR63
Binding Specificity:	Extracellular Domain
Reactivity:	Human, Mouse, Cow, Rat, Pig, Gorilla, Hamster
Host:	Rabbit
Clonality:	Polyclonal
Conjugate:	This GPR63 antibody is un-conjugated
Application:	Immunohistochemistry (Paraffin-embedded Sections) (IHC (p))

Product Details

Purpose:	Rabbit polyclonal antibody raised against synthetic peptide of GPR63.
Immunogen:	A synthetic peptide corresponding to 15 amino acids at extracellular domain of human GPR63.
Specificity:	BLAST analysis of the peptide immunogen showed no homology with other human proteins.
Cross-Reactivity:	Cow, Gorilla, Hamster, Human, Mouse, Pig, Rat
Cross-Reactivity (Details):	BLAST analysis of the peptide immunogen showed no homology with other human proteins.

Target Details

Target:	GPR63
Alternative Name:	GPR63 (GPR63 Products)
Background:	Full Gene Name: G protein-coupled receptor 63

Target Details

Synonyms: PSP24(beta),PSP24B

Gene ID: 81491

Application Details

Application Notes: Immunohistochemistry (Formalin/PFA-fixed paraffin-embedded sections) (19 µg/mL)
The optimal working dilution should be determined by the end user.

Restrictions: For Research Use only

Handling

Format: Liquid

Buffer: In PBS (0.09 % sodium azide)

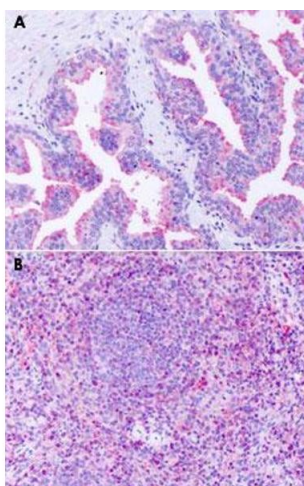
Preservative: Sodium azide

Precaution of Use: This product contains Sodium azide: a POISONOUS AND HAZARDOUS SUBSTANCE which should be handled by trained staff only.

Storage: 4 °C,-80 °C

Storage Comment: Store at 4°C. For long term storage store at -80°C.
Aliquot to avoid repeated freezing and thawing.

Images



Immunohistochemistry

Image 1. Immunohistochemical staining of formalin-fixed paraffin-embedded human prostate (A) and human spleen (B) with GPR63 polyclonal antibody .