

Datasheet for ABIN5579218
anti-GPR68 antibody (C-Term)[Go to Product page](#)

1 Image

Overview

Quantity:	50 µg
Target:	GPR68
Binding Specificity:	C-Term
Reactivity:	Human
Host:	Rabbit
Clonality:	Polyclonal
Conjugate:	This GPR68 antibody is un-conjugated
Application:	ELISA, Immunohistochemistry (Paraffin-embedded Sections) (IHC (p)), Immunocytochemistry (ICC)

Product Details

Purpose:	Rabbit polyclonal antibody raised against synthetic peptide of GPR68.
Immunogen:	A synthetic peptide corresponding to 20 amino acids at C-terminus of human GPR68.
Specificity:	BLAST analysis of the peptide immunogen showed no homology with other human proteins.
Cross-Reactivity:	Human
Cross-Reactivity (Details):	BLAST analysis of the peptide immunogen showed no homology with other human proteins.

Target Details

Target:	GPR68
Alternative Name:	GPR68 (GPR68 Products)

Target Details

Background: Full Gene Name: G protein-coupled receptor 68
Synonyms: MGC111379,MGC156983,OGR1

Gene ID: 8111

Application Details

Application Notes: Immunohistochemistry (Formalin/PFA-fixed paraffin-embedded sections) (5-7.5 µg/mL)
The optimal working dilution should be determined by the end user.

Restrictions: For Research Use only

Handling

Format: Liquid

Buffer: In PBS (0.09 % sodium azide)

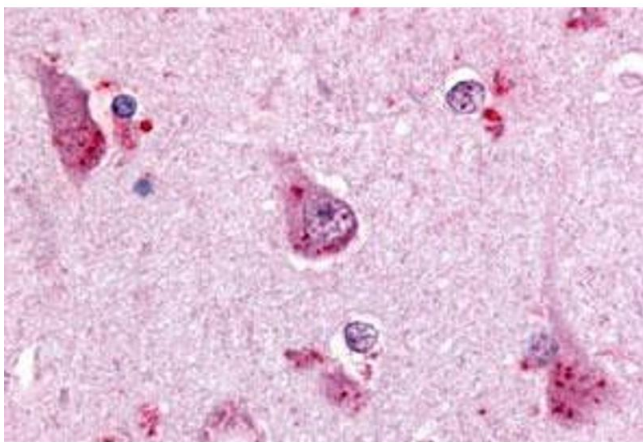
Preservative: Sodium azide

Precaution of Use: This product contains Sodium azide: a POISONOUS AND HAZARDOUS SUBSTANCE which should be handled by trained staff only.

Storage: 4 °C,-80 °C

Storage Comment: Store at 4°C. For long term storage store at -80°C.
Aliquot to avoid repeated freezing and thawing.

Images



Immunohistochemistry

Image 1. Immunohistochemical (Formalin/PFA-fixed paraffin-embedded sections) staining in human brain, cortex with GPR68 polyclonal antibody . Immunohistochemistry of formalin-fixed, paraffin-embedded tissue after heat-induced antigen retrieval.