



[Go to Product page](#)

Datasheet for ABIN5579224

anti-GPR75 antibody (C-Term)

1 Image

Overview

Quantity:	50 µg
Target:	GPR75
Binding Specificity:	C-Term
Reactivity:	Human, Rat, Horse, Cow, Pig, Rabbit, Monkey, Hamster, Xenopus laevis, Gorilla, Chicken
Host:	Rabbit
Clonality:	Polyclonal
Conjugate:	This GPR75 antibody is un-conjugated
Application:	Immunohistochemistry (Paraffin-embedded Sections) (IHC (p))

Product Details

Purpose:	Rabbit polyclonal antibody raised against synthetic peptide of GPR75.
Immunogen:	A synthetic peptide corresponding to 19 amino acids at C-terminus of human GPR75.
Specificity:	BLAST analysis of the peptide immunogen showed no homology with other human proteins.
Cross-Reactivity:	Chicken, Cow, Gorilla, Hamster, Horse, Human, Monkey, Pig, Rabbit, Rat, Xenopus laevis
Cross-Reactivity (Details):	BLAST analysis of the peptide immunogen showed no homology with other human proteins.

Target Details

Target:	GPR75
Alternative Name:	GPR75 (GPR75 Products)
Background:	Full Gene Name: G protein-coupled receptor 75

Target Details

Synonyms: GPR-chr2,WI-31133

Gene ID: 10936

Application Details

Application Notes: Immunohistochemistry (Formalin/PFA-fixed paraffin-embedded sections) (14 µg/mL)
The optimal working dilution should be determined by the end user.

Restrictions: For Research Use only

Handling

Format: Liquid

Buffer: In PBS (0.09 % sodium azide)

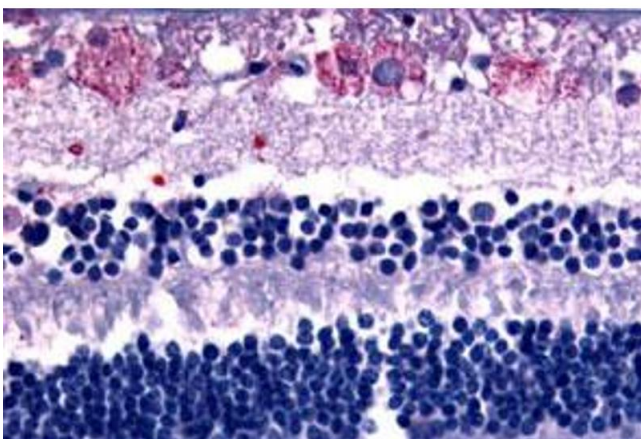
Preservative: Sodium azide

Precaution of Use: This product contains Sodium azide: a POISONOUS AND HAZARDOUS SUBSTANCE which should be handled by trained staff only.

Storage: 4 °C,-80 °C

Storage Comment: Store at 4°C. For long term storage store at -80°C.
Aliquot to avoid repeated freezing and thawing.

Images



Immunohistochemistry

Image 1. Immunohistochemical (Formalin/PFA-fixed paraffin-embedded sections) staining in human eye, retina with GPR75 polyclonal antibody. Immunohistochemistry of formalin-fixed, paraffin-embedded tissue after heat-induced antigen retrieval.