



[Go to Product page](#)

Datasheet for ABIN5579243

## anti-GPR85 antibody (C-Term)

### 1 Image

#### Overview

Quantity:	50 µg
Target:	GPR85
Binding Specificity:	C-Term
Reactivity:	Human, Mouse, Rat, Zebrafish (Danio rerio), Chicken, Xenopus laevis, Cow, Dog, Hamster, Horse, Monkey, Pig, Rabbit, Orang-Utan, Gorilla
Host:	Rabbit
Clonality:	Polyclonal
Conjugate:	This GPR85 antibody is un-conjugated
Application:	Immunohistochemistry (Paraffin-embedded Sections) (IHC (p)), Immunocytochemistry (ICC)

#### Product Details

Purpose:	Rabbit polyclonal antibody raised against synthetic peptide of GPR85.
Immunogen:	A synthetic peptide corresponding to 20 amino acids at C-terminus of human GPR85.
Specificity:	BLAST analysis of the peptide immunogen showed no homology with other human proteins, except NLRC3 (40 %).
Cross-Reactivity:	Chicken, Cow, Dog, Gorilla, Hamster, Horse, Human, Monkey, Mouse, Orang-Utan, Pig, Rabbit, Rat, Xenopus laevis, Zebrafish (Danio rerio)
Cross-Reactivity (Details):	BLAST analysis of the peptide immunogen showed no homology with other human proteins, except NLRC3 (40 %).

## Target Details

---

Target:	GPR85
Alternative Name:	GPR85 ( <a href="#">GPR85 Products</a> )
Background:	Full Gene Name: G protein-coupled receptor 85 Synonyms: SREB,SREB2
Gene ID:	54329

## Application Details

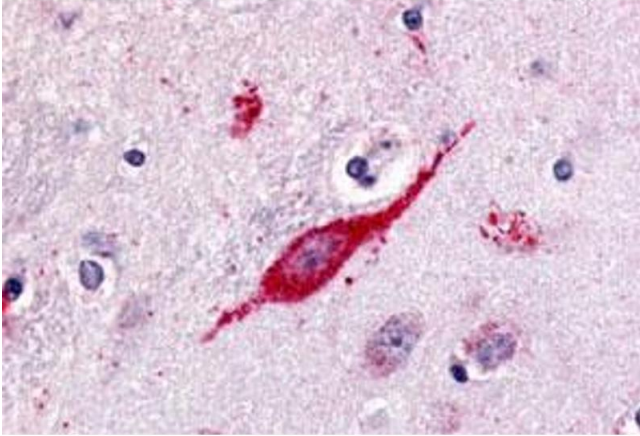
---

Application Notes:	Immunohistochemistry (Formalin/PFA-fixed paraffin-embedded sections) (9-17 µg/mL) The optimal working dilution should be determined by the end user.
Restrictions:	For Research Use only

## Handling

---

Format:	Liquid
Buffer:	In PBS (0.09 % sodium azide)
Preservative:	Sodium azide
Precaution of Use:	This product contains Sodium azide: a POISONOUS AND HAZARDOUS SUBSTANCE which should be handled by trained staff only.
Storage:	4 °C,-80 °C
Storage Comment:	Store at 4°C. For long term storage store at -80°C. Aliquot to avoid repeated freezing and thawing.



### Immunohistochemistry

**Image 1.** Immunohistochemical (Formalin/PFA-fixed paraffin-embedded sections) staining in human brain, neuron with GPR85 polyclonal antibody . Immunohistochemistry of formalin-fixed, paraffin-embedded tissue after heat-induced antigen retrieval.