

Datasheet for ABIN5579246  
**anti-GPR87 antibody (C-Term)**[Go to Product page](#)

## 1 Image

## Overview

Quantity:	50 µg
Target:	GPR87
Binding Specificity:	C-Term
Reactivity:	Human, Monkey, Cow, Dog, Rabbit, Horse, Pig, Hamster
Host:	Rabbit
Clonality:	Polyclonal
Conjugate:	This GPR87 antibody is un-conjugated
Application:	Immunohistochemistry (Paraffin-embedded Sections) (IHC (p))

## Product Details

Purpose:	Rabbit polyclonal antibody raised against synthetic peptide of GPR87.
Immunogen:	A synthetic peptide corresponding to 19 amino acids at C-terminus of human GPR87.
Specificity:	BLAST analysis of the peptide immunogen showed no homology with other human proteins, except YSK4 (63 %).
Cross-Reactivity:	Cow, Dog, Hamster, Horse, Human, Monkey, Pig, Rabbit
Cross-Reactivity (Details):	BLAST analysis of the peptide immunogen showed no homology with other human proteins, except YSK4 (63 %).

## Target Details

Target:	GPR87
---------	-------

## Target Details

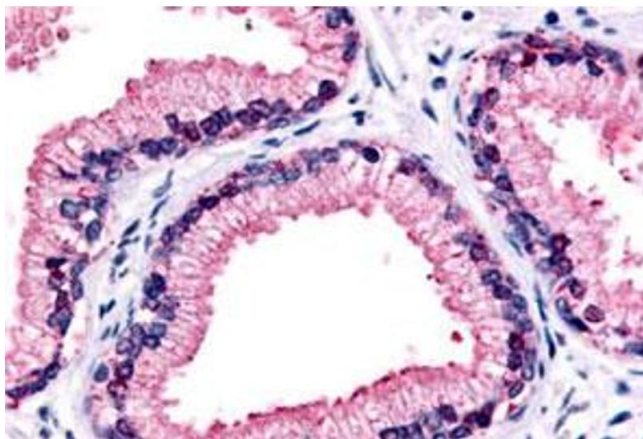
Alternative Name:	GPR87 ( <a href="#">GPR87 Products</a> )
Background:	Full Gene Name: G protein-coupled receptor 87 Synonyms: FKSG78,GPR95,KPG_002,MGC131898
Gene ID:	53836
Pathways:	<a href="#">cAMP Metabolic Process</a>

## Application Details

Application Notes:	Immunohistochemistry (Formalin/PFA-fixed paraffin-embedded sections) (6-14 µg/mL) The optimal working dilution should be determined by the end user.
Restrictions:	For Research Use only

## Handling

Format:	Liquid
Buffer:	In PBS (0.09 % sodium azide)
Preservative:	Sodium azide
Precaution of Use:	This product contains Sodium azide: a POISONOUS AND HAZARDOUS SUBSTANCE which should be handled by trained staff only.
Storage:	4 °C,-80 °C
Storage Comment:	Store at 4°C. For long term storage store at -80°C. Aliquot to avoid repeated freezing and thawing.



#### Immunohistochemistry

**Image 1.** Immunohistochemical (Formalin/PFA-fixed paraffin-embedded sections) staining in human prostate, epithelium with GPR87 polyclonal antibody . Immunohistochemistry of formalin-fixed, paraffin-embedded tissue after heat-induced antigen retrieval.