

Datasheet for ABIN5579249

anti-GPR88 antibody**1** Image[Go to Product page](#)

Overview

Quantity:	50 µg
Target:	GPR88
Reactivity:	Human, Rat, Mouse, Cow, Monkey, Rabbit, Gorilla, Hamster
Host:	Rabbit
Clonality:	Polyclonal
Conjugate:	This GPR88 antibody is un-conjugated
Application:	Immunohistochemistry (Paraffin-embedded Sections) (IHC (p))

Product Details

Purpose:	Rabbit polyclonal antibody raised against synthetic peptide of GPR88.
Immunogen:	A synthetic peptide (conjugated with KLH) corresponding to human GPR88.
Specificity:	1st Cytoplasmic domain of human.
Cross-Reactivity:	Cow, Gorilla, Hamster, Human, Monkey, Mouse, Rabbit, Rat

Target Details

Target:	GPR88
Alternative Name:	GPR88 (GPR88 Products)
Background:	Full Gene Name: G protein-coupled receptor 88 Synonyms: STRG
Gene ID:	54112

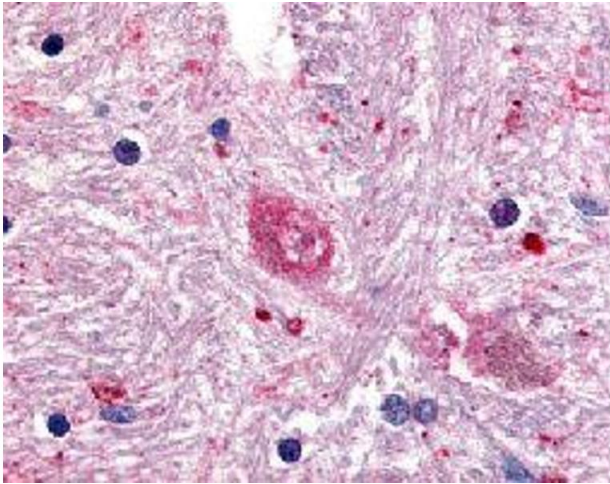
Application Details

Application Notes:	Immunohistochemistry (Formalin/PFA-fixed paraffin-embedded sections) (5 µg/mL) The optimal working dilution should be determined by the end user.
Restrictions:	For Research Use only

Handling

Format:	Liquid
Buffer:	In PBS (0.09 % sodium azide)
Preservative:	Sodium azide
Precaution of Use:	This product contains Sodium azide: a POISONOUS AND HAZARDOUS SUBSTANCE which should be handled by trained staff only.
Storage:	4 °C,-80 °C
Storage Comment:	Store at 4°C. For long term storage store at -80°C. Aliquot to avoid repeated freezing and thawing.

Images



Immunohistochemistry

Image 1. Immunohistochemical (Formalin/PFA-fixed paraffin-embedded sections) staining in human brain (caudate) with GPR88 polyclonal antibody .